



**NYCO Minerals, Inc.
25 Year Mine Plan – Lewis and Oakhill Mines
2006 Report**

Prepared for: NYCO Minerals, Inc.
By: AMEC Americas Ltd.
Effective Date: Sep. 7, 2006
Project No.: 152441

amec[®]

IMPORTANT NOTICE

This report was prepared exclusively for NYCO Minerals Inc. by AMEC Americas Limited (AMEC). The quality of information, conclusions and estimates contained herein is consistent with the level of effort involved in AMEC's services and based on: i) information available at the time of preparation, ii) data supplied by outside sources and iii) the assumptions, conditions and qualifications set forth in this report. This report is intended to be used by NYCO Minerals Inc. only, subject to the terms and conditions of its contract with AMEC. Any other use of, or reliance on, this report by any third party is at that party's sole risk.





CONTENTS

1.0 INTRODUCTION 1-1

2.0 SCOPE OF MINE PLAN..... 2-1

3.0 25 YEAR MINE PLAN – LEWIS AND OAKHILL MINES..... 3-1

 3.1 Oakhill Mine Waste Plan Options 3-2

 3.2 Mining Transition from Lewis to Oakhill..... 3-2

 3.3 Graymont Mining 3-2

 3.4 Production Schedules..... 3-3

 3.4.1 Lewis Mine..... 3-3

 3.4.2 Oakhill Mine..... 3-4

 3.4.3 End of Year Oakhill Plots..... 3-4

 3.4.4 Combined Lewis and Oakhill Mines 3-5

 3.5 Waste Storage..... 3-6

4.0 CONCLUSIONS AND RECOMMENDATIONS 4-6

TABLES

Table 3-1: Lewis Mine Production Schedule 3-3

Table 3-2: Oakhill Mine Production Schedule 3-4

Table 3-3: Combined Lewis and Oakhill Production Schedule 3-5

APPENDICES

- Maps: 152441-LEW-170-0006: Lewis Mine – End of Mine
- 152441-OAK-170-0001: Oakhill Mine – End of 2006
- 152441-OAK-170-0002: Oakhill Mine – End of 2011
- 152441-OAK-170-0003: Oakhill Mine – End of 2012
- 152441-OAK-170-0004: Oakhill Mine – End of 2013
- 152441-OAK-170-0005: Oakhill Mine – End of 2014
- 152441-OAK-170-0006: Oakhill Mine – End of 2015
- 152441-OAK-170-0007: Oakhill Mine – End of 2016
- 152441-OAK-170-0008: Oakhill Mine – End of 2017
- 152441-OAK-170-0009: Oakhill Mine – End of 2018
- 152441-OAK-170-0010: Oakhill Mine – End of 2019
- 152441-OAK-170-0011: Oakhill Mine – End of 2020
- 152441-OAK-170-0012: Oakhill Mine – End of 2025
- 152441-OAK-170-0013: Oakhill Mine – End of 2030
- 152441-OAK-170-0014: Oakhill Mine – End of 2031



1.0 INTRODUCTION

AMEC, Mining & Metals Consulting Group, Calgary office, was contracted by NYCO Minerals Inc. (NYCO), to create a 25 year plan combining the Lewis and Oakhill mines beginning in 2006.

2.0 SCOPE OF MINE PLAN

The scope of work includes completing a 25 year plan for the Lewis and Oakhill mines. Deliverables for the plan include annual plots of mine advances as well as production tables detailing the ore and waste movement by year. The 25 year plan is complemented by the Lewis 5 Year Plan submitted as a separate document.

3.0 25 YEAR MINE PLAN – LEWIS AND OAKHILL MINES

The 25 Year Mine Plan was designed using the guidelines provided by NYCO. The overall topography was updated using the new surface surveys completed in January 2006. Benches for the Oakhill Mine were taken in 25 ft benches to remain consistent with the Oakhill block model and benches for the Lewis Mine were taken in 10 ft increments to remain consistent with the Lewis block model. The mining sequence for the Lewis Mine remains unchanged from the 5 year plan.

The 25 Year Mine Plan is a high level strategic plan developed using Minesight® software. Based on the block size of the model and the functionality of the program detailed access ramps have not been designed for the scheduled cuts. However, accesses indicative of the ramps have been placed throughout the end of year maps to ensure entrance to all cuts at a maximum 10% grade.

The following assumptions were used to determine the amount of ore delivered to the plant as well as the amount of material moved:

- General mining ore loss – 10%
- Ore loss near dyke – 50%
- Amount of lost ore added to waste tonnage – 50%
- Amount of lost ore left in footwall – 50%
- Process recovery – 39%
- Tonnage factors of ore at 10.58 ft³/ton and of waste at 11.28 ft³/ton
- Minimum Wollastonite ore grade of 40%
- Estimated mining capacity – 700 kt/yr



3.1 Oakhill Mine Waste Plan Options

Based on the pit surface provided, the Oakhill Mine contains 16.7 Mt of waste and 2.9 Mt of ore that will be delivered to the plant. This results in an overall delivered stripping ratio of 5.8:1. Based on these reserves, waste production would need to increase beyond the current mining capacity to maintain the supply of ore to the plant.

Two options were run with differing waste schedules. The first option involves maintaining the 500 kt/yr waste schedule until 2024 when the waste production is then ramped up to 1.2 Mt/yr to maintain adequate ore feed to the plant. There are several pinch points in this option where mining slices may become difficult. As well, access to some of the scheduled cuts in this option become questionable due to the reduced mining space. The second option involves increasing waste mining to 955 kt/yr from the year 2016 onwards. This option results in more mining space and easier access to cuts along the benches of the mine. Because of the potential limitation of not having adequate mining space in the first option, the second option was deemed more favourable and will be used for the 25 year mine plan. However, the differences in the capital cost estimates for each option have not been investigated in this study.

3.2 Mining Transition from Lewis to Oakhill

The transition from the Lewis to the Oakhill mine begins in 2012. As waste mining in the Lewis Mine decreases in the later stages, the opportunity for waste mining in the Oakhill Mine is available. Starting in 2012, 200 kt of waste is scheduled for removal by NYCO in the Oakhill Mine. This is in addition to the annual waste material removal by Graymont (See Section 3.3). The amount of waste removed each year by NYCO increases until the Oakhill Mine is at full capacity in 2016.

The Oakhill Mine begins ore production in 2014 by contributing 22 kt to the plant feed. Production ramps up the following year to 72 kt of ore and reaches full capacity (180 kt ore to plant) the following year in 2016.

3.3 Graymont Mining

Starting in 2006, Graymont, Inc. (Graymont) has been contracted to remove 200 kt of cap rock per year in the Oakhill pit. This is scheduled to continue until 2015, resulting in 2,000 kt of cap rock removed from the Oakhill Mine. The Graymont mining areas are currently scheduled for the east side of the pit from the 1100 bench to the 1050 bench. The volumes of material moved by Graymont mining have been removed from the 25 year plan production schedules.



3.4 Production Schedules

3.4.1 Lewis Mine

A summary of the production schedule for the life of the Lewis Mine is as follows:

Year	Total Waste (tons)	Ore to Plant (tons)	Product (tons)	Delivered S/R	Woll. (%)	Total (tons)
2006	518,587	177,726	81,158	2.92	49.3	696,313
2007	504,821	185,063	73,541	2.73	50.9	689,884
2008	464,069	184,710	72,037	2.51	51.5	648,779
2009	462,408	180,569	70,422	2.56	50.8	642,978
2010	487,613	184,424	71,925	2.64	50.1	672,037
2011	444,908	182,505	71,177	2.44	50.6	627,414
2012	217,990	179,292	69,924	1.22	49.9	397,281
2013	69,914	181,004	70,591	0.39	50.9	250,917
2014	41,875	156,128	60,890	0.27	51.5	198,002
2015	35,664	109,518	42,712	0.33	50.7	145,183
Total	3,247,850	1,720,937	684,376	1.89	50.6	4,968,787

Table 3-1: Lewis Mine Production Schedule

A plan showing the year end contours for the Lewis Mine can be seen in Figure 152441-LEW-170-0006 in the Appendix.



3.4.2 Oakhill Mine

A summary of the production schedule for the current economic pit design for the Oakhill Mine is as follows (note: Graymont Mining tonnages have been removed from the schedule):

Year	Total Waste (tons)	Ore to Plant (tons)	Product (tons)	Delivered S/R	Woll. (%)	Total (tons)
2012	238,444					238,444
2013	434,226					434,226
2014	458,063	22,995	8,968	19.92	53.5	481,058
2015	417,549	71,799	28,002	5.82	50.5	489,348
2016	956,811	180,203	70,279	5.31	49.4	1,137,015
2017	952,355	180,261	70,302	5.28	48.6	1,132,616
2018	949,918	180,271	70,306	5.27	47.1	1,130,189
2019	953,036	179,572	70,033	5.31	57.2	1,132,608
2020	951,794	179,685	70,077	5.30	51.0	1,131,479
2021	956,088	179,845	70,140	5.32	53.6	1,135,934
2022	954,578	180,985	70,584	5.27	53.8	1,135,562
2023	954,803	179,946	70,179	5.31	59.8	1,134,749
2024	954,714	181,362	70,731	5.26	52.7	1,136,075
2025	950,529	180,923	70,560	5.25	57.6	1,131,453
2026	953,093	180,823	70,521	5.27	48.3	1,133,915
2027	956,309	180,392	70,353	5.30	50.2	1,136,700
2028	890,185	180,184	70,272	4.94	51.4	1,070,369
2029	339,676	180,343	70,334	1.88	50.0	520,019
2030	304,646	180,125	70,249	1.69	55.4	484,771
2031	190,594	71,023	27,699	2.68	60.7	261,616
Total	14,717,409	2,870,735	1,119,587	5.13	52.6	17,588,145

Table 3-2: Oakhill Mine Production Schedule

3.4.3 End of Year Oakhill Plots

Plots detailing the end of year advances for the Oakhill Mine can be found in Figures 152441-OAK-170-0001 to 152441-OAK-170-0014 in the Appendix. The plans detail the beginning of Graymont mining in 2006, the mine prior to NYCO production in 2012, the beginning phases of NYCO mining, the continuation of mining from 2014-2030 and the end of the current design pit life in 2031.

In 2015, a small ledge can be noticed in the northwest corner of the mine. Depending on the surrounding pit access, getting into the cut may be slightly difficult. A small



ramp from the adjacent topography may need to be developed to allow mining in the area. The setup for the cut for this year is definitely workable but may not be ideal for the operation. Further analysis may be required to determine the proper entry sequence for this cut.

3.4.4 Combined Lewis and Oakhill Mines

A summary of the production schedule for the Lewis and Oakhill Mines with the transition between the mines is as follows (note: Graymont Mining tonnages have been removed from the schedule):

Year	Total Waste (tons)	Ore to Plant (tons)	Product (tons)	Delivered S/R	Woll. (%)	Total (tons)
2006	518,587	177,726	69,313	2.92	49.3	696,313
2007	504,821	185,063	72,175	2.73	50.9	689,884
2008	464,069	184,710	72,037	2.51	51.5	648,779
2009	462,408	180,569	70,422	2.56	50.8	642,978
2010	487,613	184,424	71,925	2.64	50.1	672,037
2011	444,908	182,505	71,177	2.44	50.6	627,414
2012	456,434	179,292	69,924	2.55	49.9	635,725
2013	504,140	181,004	70,591	2.79	50.9	685,143
2014	499,937	179,123	69,858	2.79	51.8	679,060
2015	453,213	181,318	70,714	2.50	50.6	634,531
2016	956,811	180,203	70,279	5.31	49.4	1,137,015
2017	952,355	180,261	70,302	5.28	48.6	1,132,616
2018	949,918	180,271	70,306	5.27	47.1	1,130,189
2019	953,036	179,572	70,033	5.31	57.2	1,132,608
2020	951,794	179,685	70,077	5.30	51.0	1,131,479
2021	956,088	179,845	70,140	5.32	53.6	1,135,934
2022	954,578	180,985	70,584	5.27	53.8	1,135,562
2023	954,803	179,946	70,179	5.31	59.8	1,134,749
2024	954,714	181,362	70,731	5.26	52.7	1,136,075
2025	950,529	180,923	70,560	5.25	57.6	1,131,453
2026	953,093	180,823	70,521	5.27	48.3	1,133,915
2027	956,309	180,392	70,353	5.30	50.2	1,136,700
2028	890,185	180,184	70,272	4.94	51.4	1,070,369
2029	339,676	180,343	70,334	1.88	50.0	520,019
2030	304,646	180,125	70,249	1.69	55.4	484,771
2031	190,594	71,023	27,699	2.68	60.7	261,616
Total	17,965,259	4,591,672	1,790,752	3.91	51.8	22,556,932

Table 3-3: Combined Lewis and Oakhill Production Schedule



3.5 Waste Storage

The Oakhill Mine requires 14.7 Mt of waste storage throughout the life of the current economic pit. Based on the size of the permitted area, adequate waste storage is available for the Oakhill Mine. An estimation of the waste storage capacity within the permitted Oakhill boundary was completed using Minesight® software. A storage structure was built at a 100 ft offset from the boundary and ranged in height from the topographical surface to the 1100 elevation. The overall slope of the dump was set at 31 degrees based on 30 foot lifts and 20 foot benches with a 37 degree angle of repose. This structure contained capacity for 324 Mft³ of loose material. As the maximum amount of loose waste produced from the Oakhill Mine after Graymont mining is 230 Mft³ (using a swell factor of 35%), the area was deemed adequately capable of handling the waste requirement.

4.0 CONCLUSIONS AND RECOMMENDATIONS

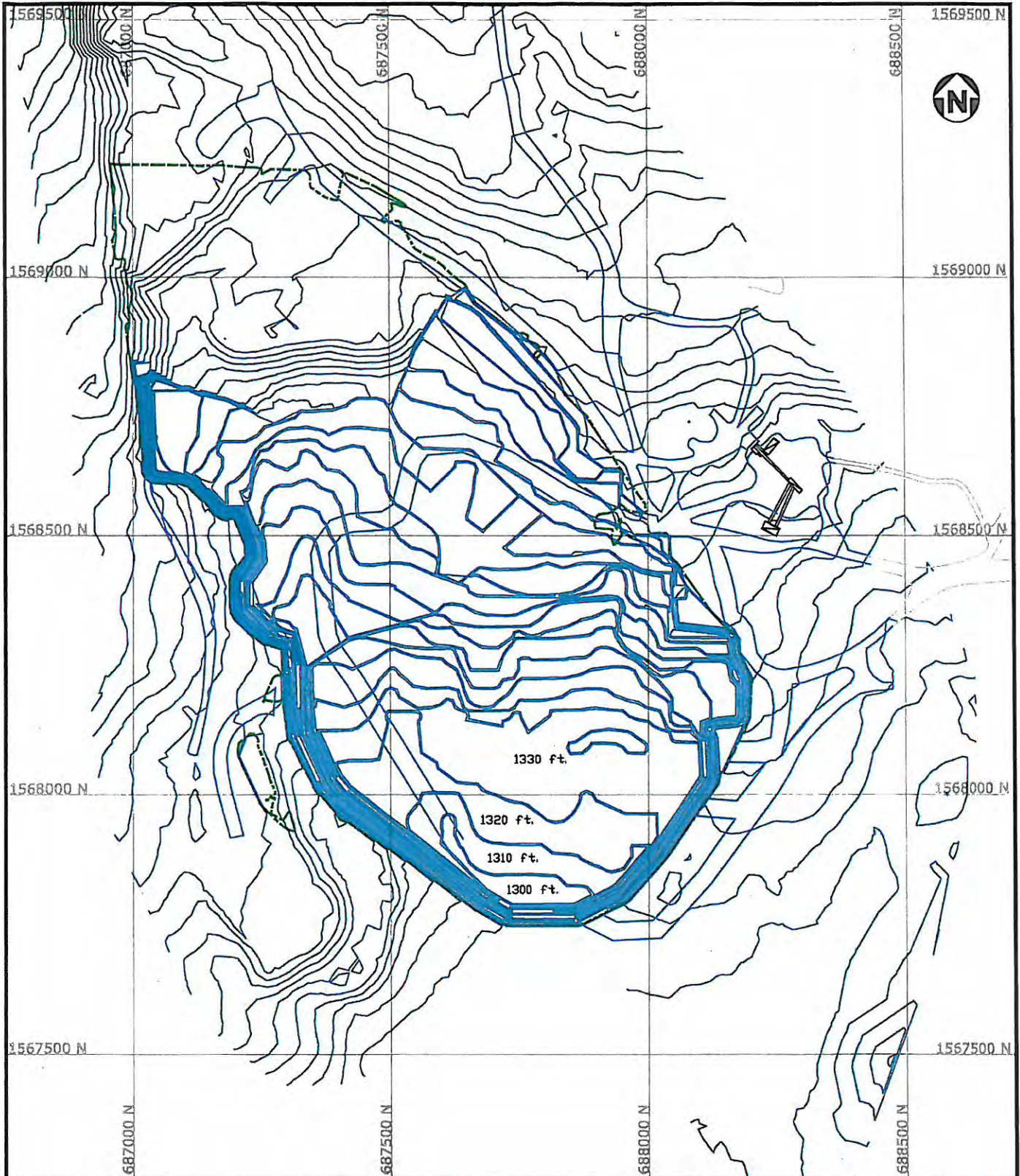
The 25 year plan for the Lewis Mine has been designed using the models and surfaces provided by NYCO. The production schedule for the Lewis Mine used in the 25 year plan is identical to the production schedule devised for the 2006 Five Year Plan of the Lewis Mine. The transition between the two mines begins in 2012 with waste removal from the Oakhill Mine. The first ore sent to the plant from the Oakhill Mine will begin in 2014. The production schedule has been designed to incorporate this transition as well as send the required amount of ore to the plant.

The Oakhill Mine represents a difficult situation due to the amount of waste to be removed. The waste schedule for this mine had to be increased as the amount of ore delivered to the plant would not be able to meet requirements with the size of the current fleet.

Taking into account the cap rock removed by Graymont Mining, two options were investigated in regards to waste removal. The first option delayed a waste production increase until year 2024 when a large increase of the fleet would be needed. The second option involved increasing the waste production from the beginning of the Oakhill Mine for a smoother waste production profile. From a mining perspective, the second option was deemed favourable for the Oakhill Mine as the mining constraints imposed by the first option presented several difficulties such as mining space issues and access issues. However, the value of delaying the increased fleet size for the project should be investigated before completely ruling out Option 1.



APPENDIX: End of Year Maps



Legend

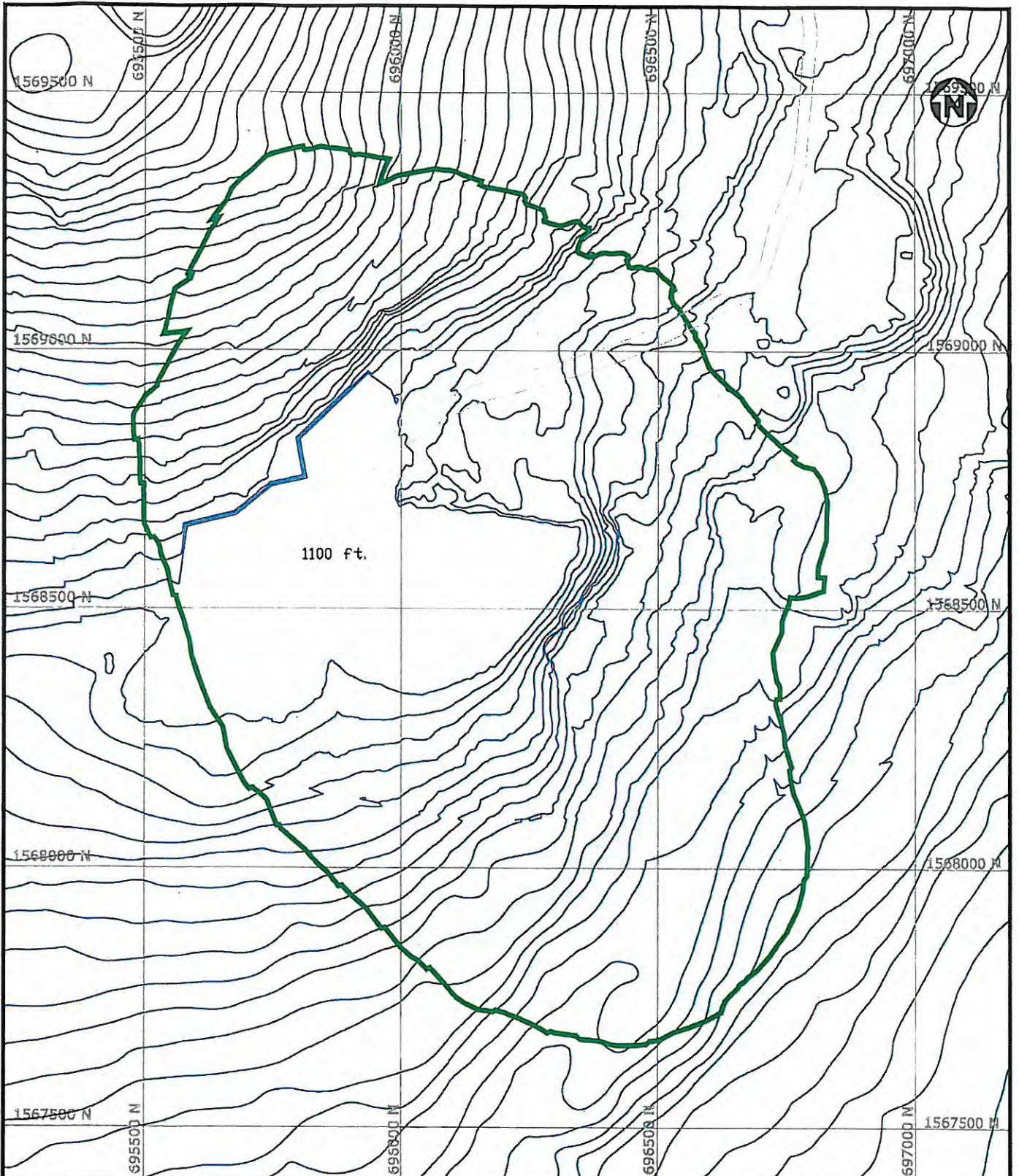
- 10ft Contour Lines
- Pit Outline
- Roads

This Document was prepared exclusively for NYCO Minerals Inc. by AMEC Americas Limited. The quality of information contained herein is considered with the level of effort involved in AMEC services and based on: 1) information available at the time of preparation, 2) data supplied by outside sources, and 3) the assumptions, conditions and qualifications set forth in this document. This document is intended to be used by NYCO Minerals Inc. only, subject to the terms and conditions of its contract with AMEC. Any other use of, or reliance on, this document by any third party is at that party's sole risk.

PROPRIETARY INFORMATION:
 THIS DRAWING IS THE PROPERTY OF AMEC AMERICAS, LTD. AND IS NOT TO BE LOANED OR REPRODUCED IN ANY WAY WITHOUT THE PERMISSION OF AMEC AMERICAS, LTD.

		COORDINATE SYSTEM <small>N.Y. State Plane, East Zone, 1927 Datum: Fort Meigs, 1928</small>		
		PROJECT NO. 152441	PROJECT PHASE	
BY	YY/MM/DD	SCALE 1" = 250'		Lewis Mine - End of Mine
APP.		DRAWING NO.		
CHK.		152441-LEW-170-0006		
DRN.	RAG 06/09/01			REV. 0

CADD FILE ADDRESS





Legend

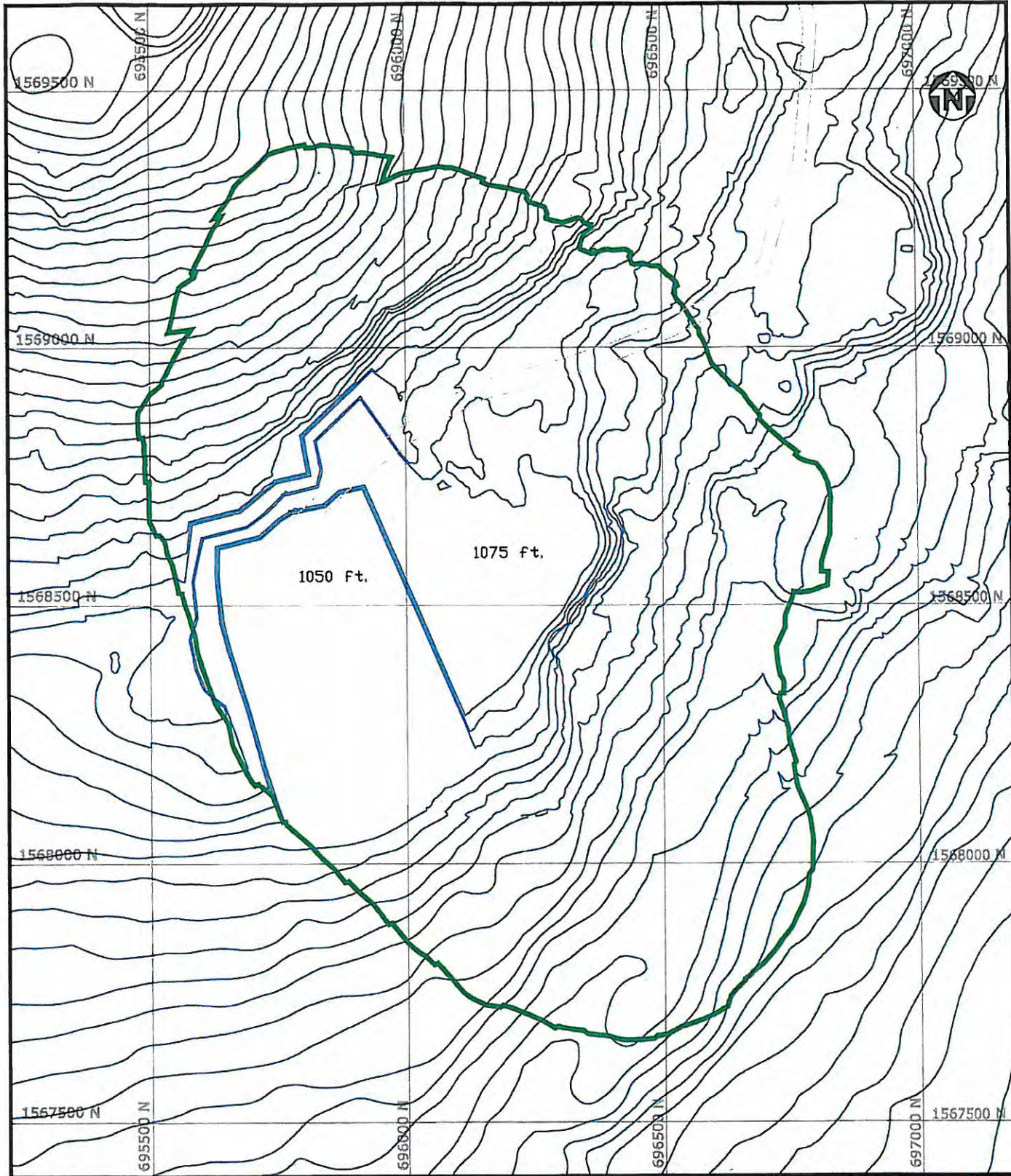
- 10ft Contour Lines
- Pit Outline
- Roads

This Document was prepared exclusively for NYCO Minerals Inc. by AMEC Americas Limited. The quality of information contained herein is consistent with the level of effort involved in AMEC services and based on: a) information available at the time of preparation, b) data supplied by outside sources, and c) the measurements, conditions and qualifications set forth in this document. This document is intended to be used by NYCO Minerals Inc. only, subject to the terms and conditions of its contract with AMEC. Any other use of, or reliance on, this document by any third party is at that party's sole risk.

PROPRIETARY INFORMATION:
 THIS DRAWING IS THE PROPERTY OF AMEC AMERICAS, LTD. AND IS NOT TO BE LOANED OR REPRODUCED IN ANY WAY WITHOUT THE PERMISSION OF AMEC AMERICAS, LTD.

 PROJECT NO. 152441		COORDINATE SYSTEM N.Y. State Plane, East Zone, 1987 Datum: Foot ABL, 1929		 SUBJECT Oakhill Mine - End of 2006
		PROJECT PHASE		
APP.	BY YY/MM/DD	SCALE 1" = 250'		REV. 0
CHK.		DRAWING NO. 152441-OAK-170-0001		
DRN.	RAC 06/09/01	CADD FILE ADDRESS		



CADD FILE ADDRESS



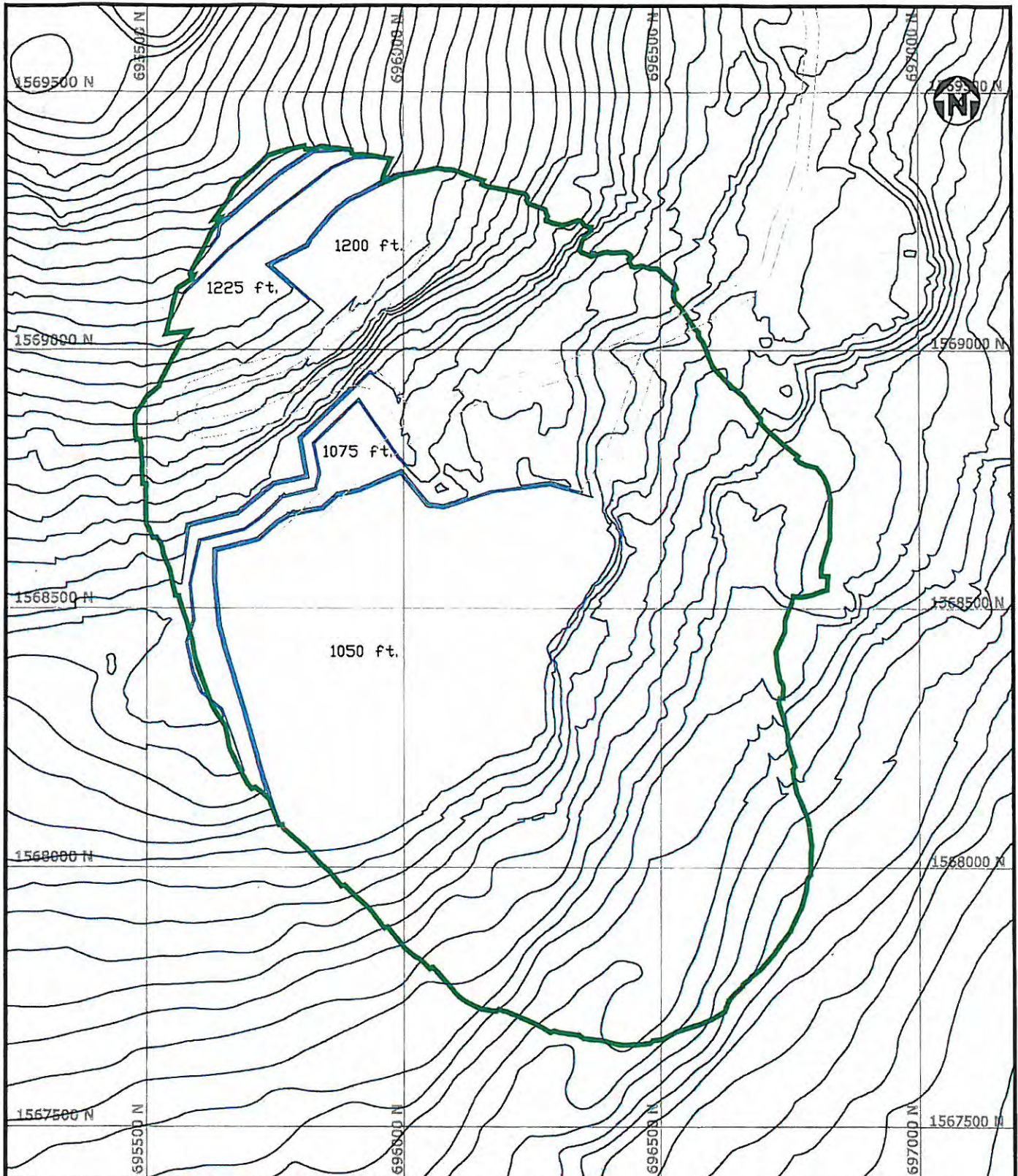
Legend
 --- 10ft Contour Lines
 --- PG Outline
 --- Roads

This Document was prepared exclusively for NYCO Minerals Inc. by AMEC Americas Limited. The quality of information contained herein is consistent with the level of effort involved in AMEC services and based on: i) information available at the time of preparation, ii) data supplied by outside sources, and iii) the assumptions, conditions and qualifications set forth in this document. This document is intended to be used by NYCO Minerals Inc. only, subject to its terms and conditions of its contract with AMEC. Any other use of, or reliance on, this document by any third party is at that party's sole risk.

PROPRIETARY INFORMATION:
 THIS DRAWING IS THE PROPERTY OF AMEC AMERICAS, LTD. AND IS NOT TO BE LOANED OR REPRODUCED IN ANY WAY WITHOUT THE PERMISSION OF AMEC AMERICAS, LTD.

 PROJECT NO. 152441		COORDINATE SYSTEM N.Y. State Plane, East Zone, 1927 Canadian Foot, MGS, 1922	 SUBJECT Oakhill Mine - End of 2011
		PROJECT PHASE SCALE 1" = 250'	
APP. CHK. DRN.	BY YY/MM/DD RAG 06/09/01	DRAWING NO. 152441-OAK-170-0002	REV. 0

CADD FILE ADDRESS



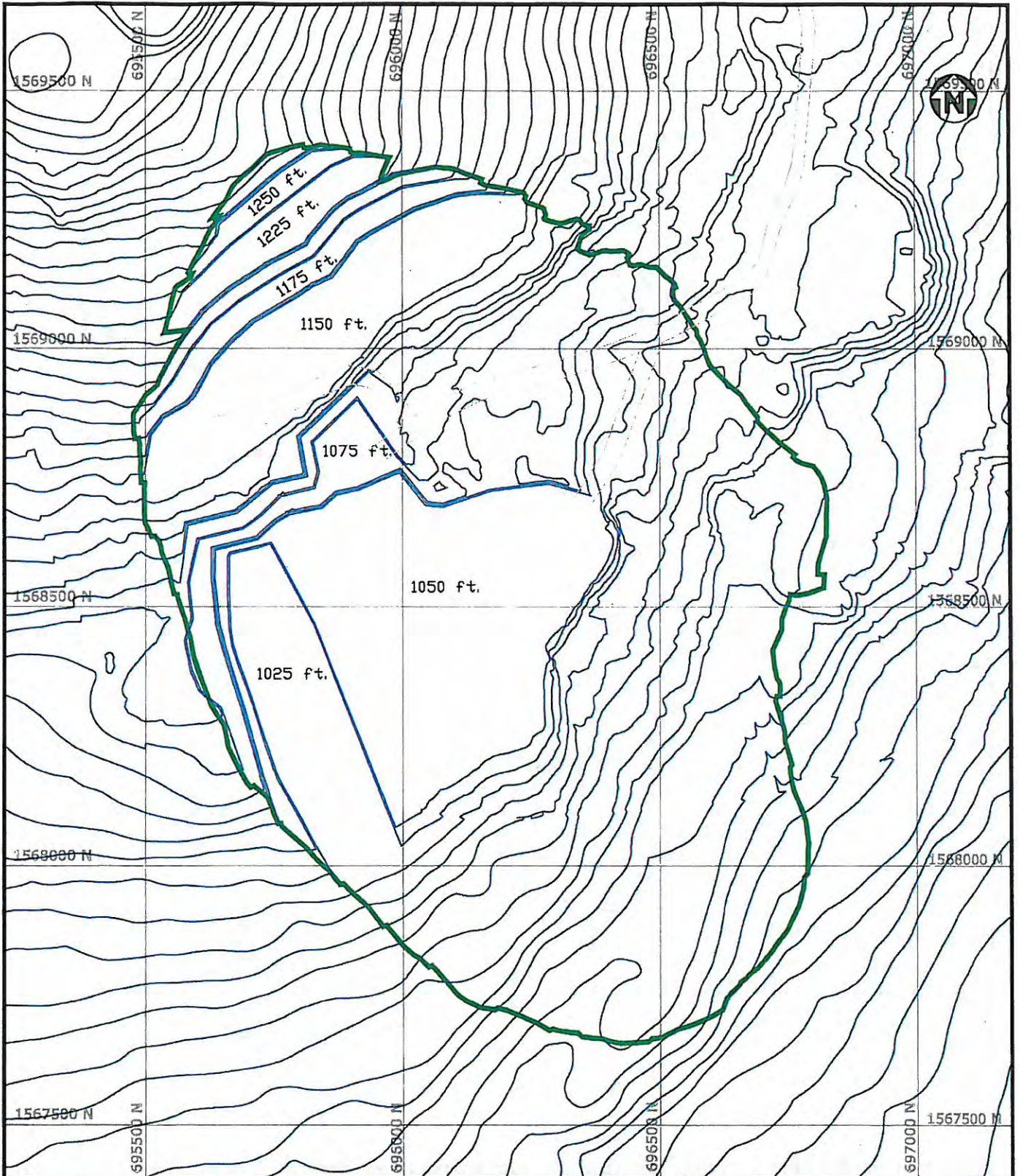
Legend

- 10ft Contour Lines
- Pit Outline
- - - Roads

This Document was prepared exclusively for NYCO Minerals Inc. by AMEC Americas Limited. The quality of information contained herein is consistent with the level of effort involved in AMEC services and based on: i) information available at the time of preparation, ii) data supplied by outside sources, and iii) the assumptions, conditions and qualifications set forth in this document. This document is intended to be used by NYCO Minerals Inc. only, subject to the terms and conditions of its contract with AMEC. Any other use of, or reliance on, this document by any third party is at that party's sole risk.

PROPRIETARY INFORMATION:
 THIS DRAWING IS THE PROPERTY OF AMEC AMERICAS, LTD. AND IS NOT TO BE LOANED OR REPRODUCED IN ANY WAY WITHOUT THE PERMISSION OF AMEC AMERICAS, LTD.

		COORDINATE SYSTEM <small>N.Y. State Plane, East Zone, 1927 Davison Feet, ABL, 1928</small>			
		PROJECT NO. 152441	PROJECT PHASE		SUBJECT
APP.	BY YY/MM/DD	SCALE 1" = 250'		Oakhill Mine - End of 2012	
CHK.		DRAWING NO. 152441-OAK-170-0003			REV. 0
DRN.	RAG 06/09/01	CADD FILE ADDRESS			



Legend

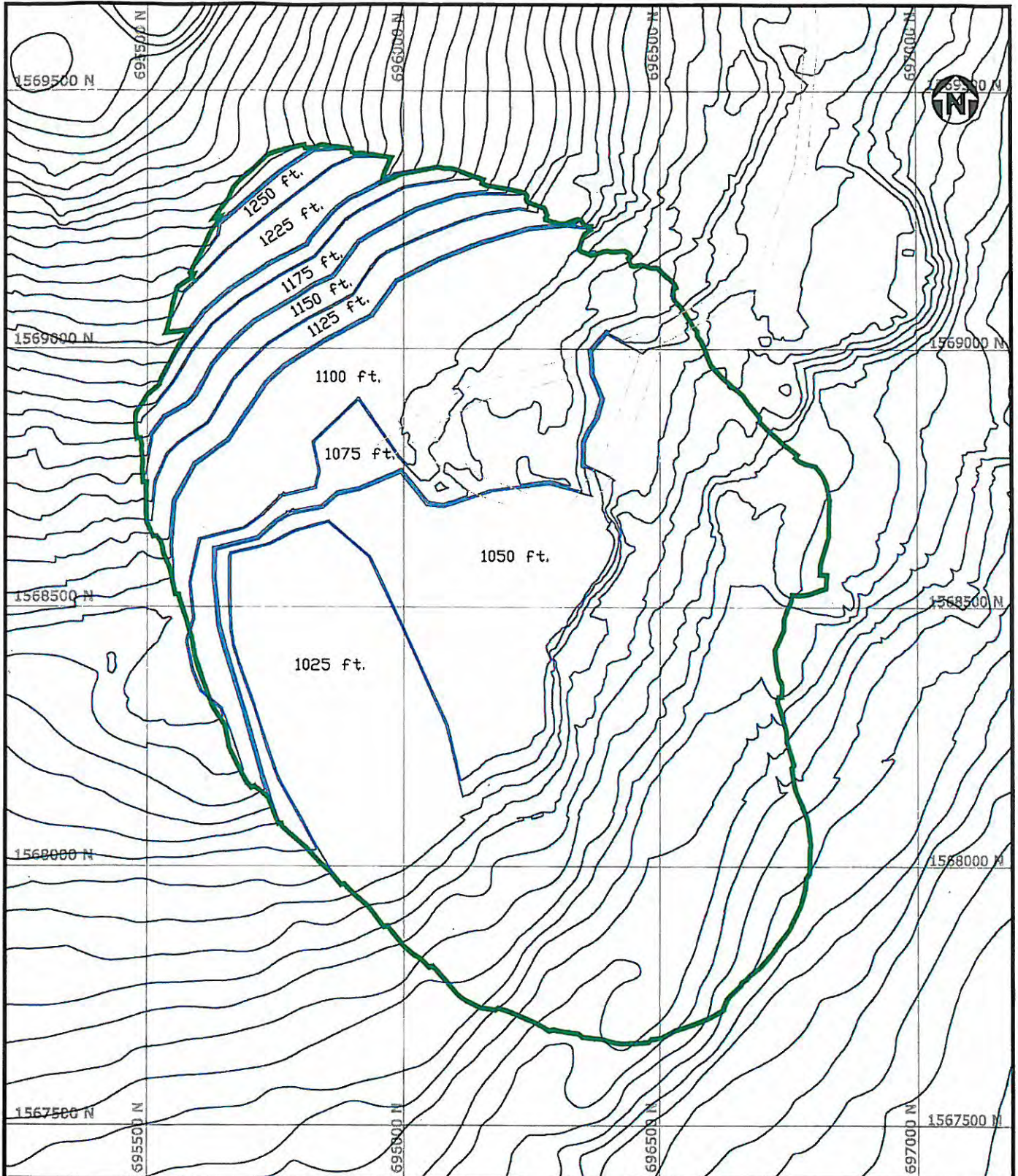
- 10ft Contour Lines
- FR Outline
- Roads

This Document was prepared exclusively for NYCO Minerals Inc. by AMEC Americas Limited. The quality of information contained herein is consistent with the level of effort involved in AMEC services and based on: a) information available at the time of preparation, b) data supplied by outside sources, and c) the assumptions, conditions and qualifications set forth in this document. This document is intended to be used by NYCO Minerals Inc. only, subject to the terms and conditions of its contract with AMEC. Any other use of, or reliance on, this document by any third party is at that party's sole risk.

PROPRIETARY INFORMATION:
 THIS DRAWING IS THE PROPERTY OF AMEC AMERICAS, LTD. AND IS NOT TO BE LOANED OR REPRODUCED IN ANY WAY WITHOUT THE PERMISSION OF AMEC AMERICAS, LTD.

		COORDINATE SYSTEM N.Y. State Plane, East Zone, 1987 Datum: Foot ABL, 1929		
		PROJECT NO. 152441	PROJECT PHASE	
APP.	BY YY/MM/DD	SCALE 1" = 250'		REV. 0
CHK.	DRAWING NO. 152441-OAK-170-0004			
DRN. RAG	06/09/01			

CADD FILE ADDRESS





Legend

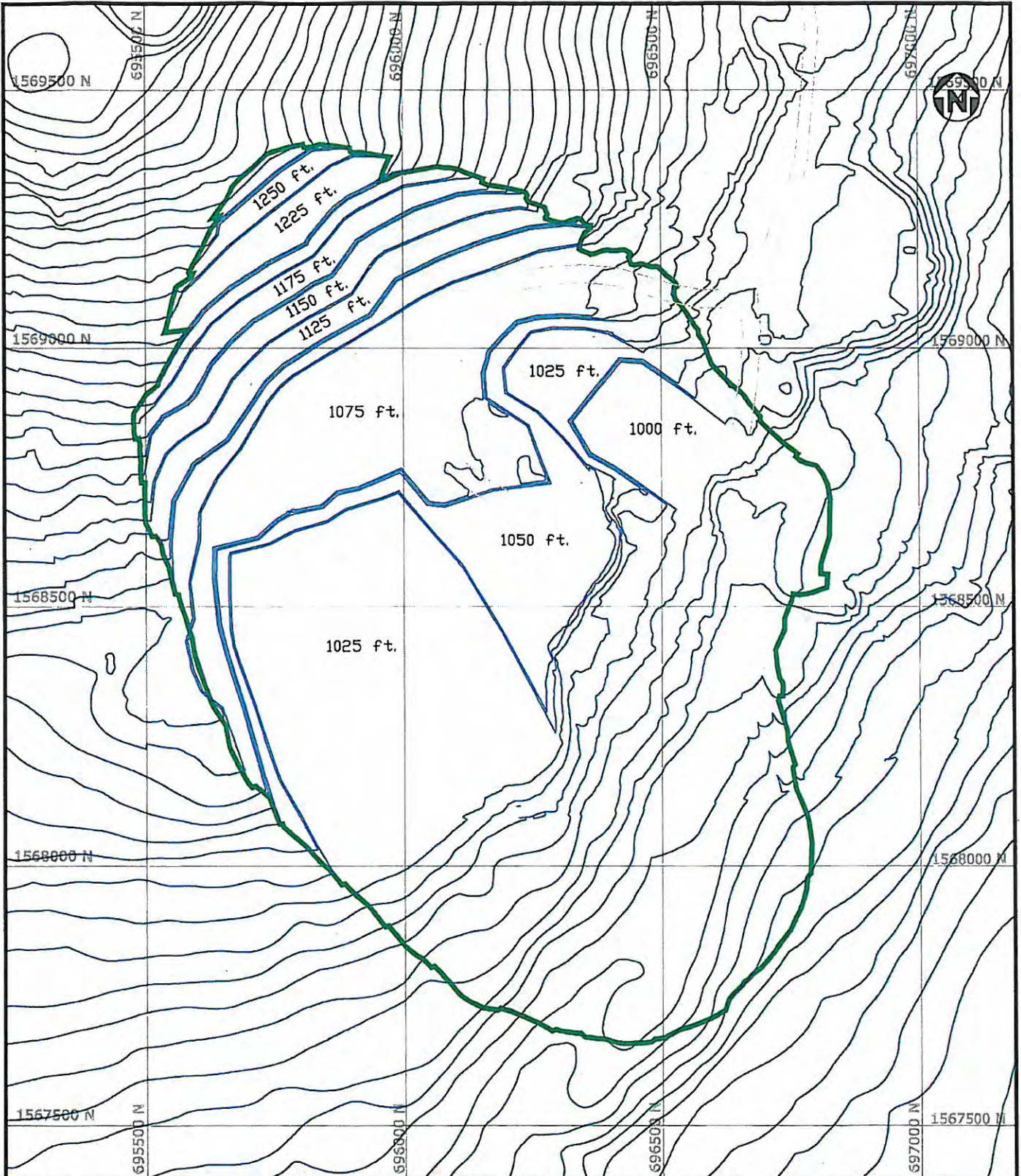
- 10' Contour Lines
- PR Outline
- Roads

This Document was prepared exclusively for NYCO Minerals Inc. by AMEC Americas Limited. The quality of information contained herein is consistent with the level of effort involved in AMEC services and based on: (i) information available at the time of preparation, (ii) data supplied by outside sources, and (iii) the assumptions, conditions and qualifications set forth in this document. This document is intended to be used by NYCO Minerals Inc. only, subject to the terms and conditions of its contract with AMEC. Any other use of, or reliance on, this document by any third party is at that party's sole risk.

PROPRIETARY INFORMATION:
 THIS DRAWING IS THE PROPERTY OF AMEC AMERICAS, LTD. AND IS NOT TO BE LOANED OR REPRODUCED IN ANY WAY WITHOUT THE PERMISSION OF AMEC AMERICAS, LTD.

		COORDINATE SYSTEM N.Y. State Plane, East Zone, 1927 Datum: Foot AEGD, 1928			
		PROJECT NO. 152441	PROJECT PHASE		SUBJECT
APP.	BY YY/MM/DD	SCALE 1" = 250'	Oakhill Mine -- End of 2014		
CHK.		DRAWING NO. 152441-OAK-170-0005			REV. 0
DRN.	RAG 06/09/01				

CADD FILE ADDRESS



Legend
 --- 10ft. Contour Lines
 --- PR. Outside Roads

This Document was prepared exclusively for NYCO Minerals Inc. by AMEC Americas Limited. The quality of information contained herein is consistent with the level of effort involved in AMEC services and based on: i) information available at the time of preparation, ii) data supplied by outside sources, and iii) the assumptions, conditions and qualifications set forth in this document. This document is intended to be used by NYCO Minerals Inc. only, subject to the terms and conditions of its contract with AMEC. Any other use of, or reliance on, this document by any third party is at that party's sole risk.

PROPRIETARY INFORMATION:
 THIS DRAWING IS THE PROPERTY OF AMEC AMERICAS, LTD. AND IS NOT TO BE LOANED OR REPRODUCED IN ANY WAY WITHOUT THE PERMISSION OF AMEC AMERICAS, LTD.

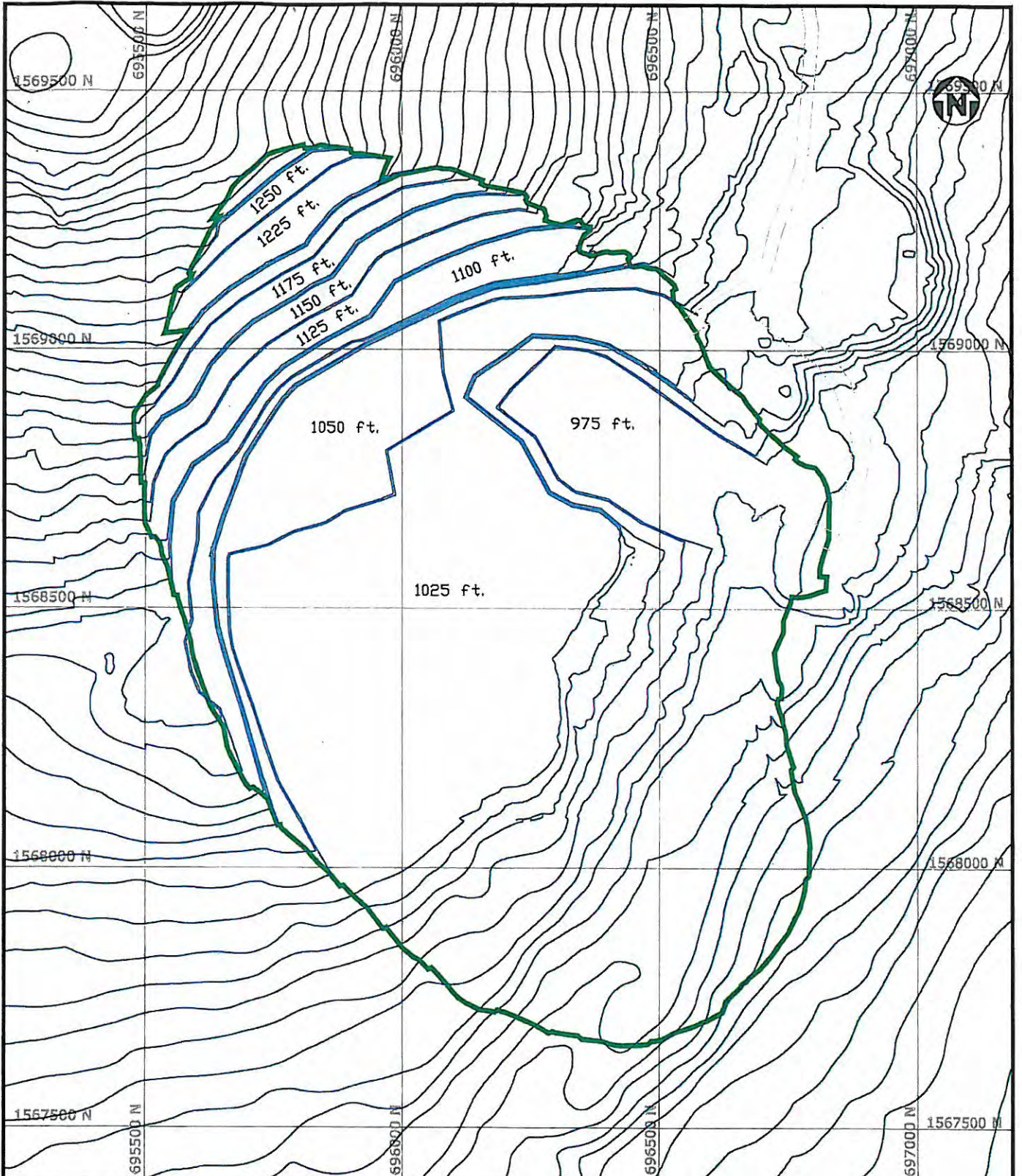


COORDINATE SYSTEM
 N.Y. State Plane, East Zone, 1927
 Datum: Foot AGL, 1929



PROJECT NO. 152441		PROJECT PHASE	SUBJECT
APP.	BY YY/MM/DD	SCALE 1" = 250'	Oakhill Mine - End of 2015
CHK.		DRAWING NO. 152441-OAK-170-0006	
DRN.	RAG 06/09/01	REV. 0	

CADD FILE ADDRESS

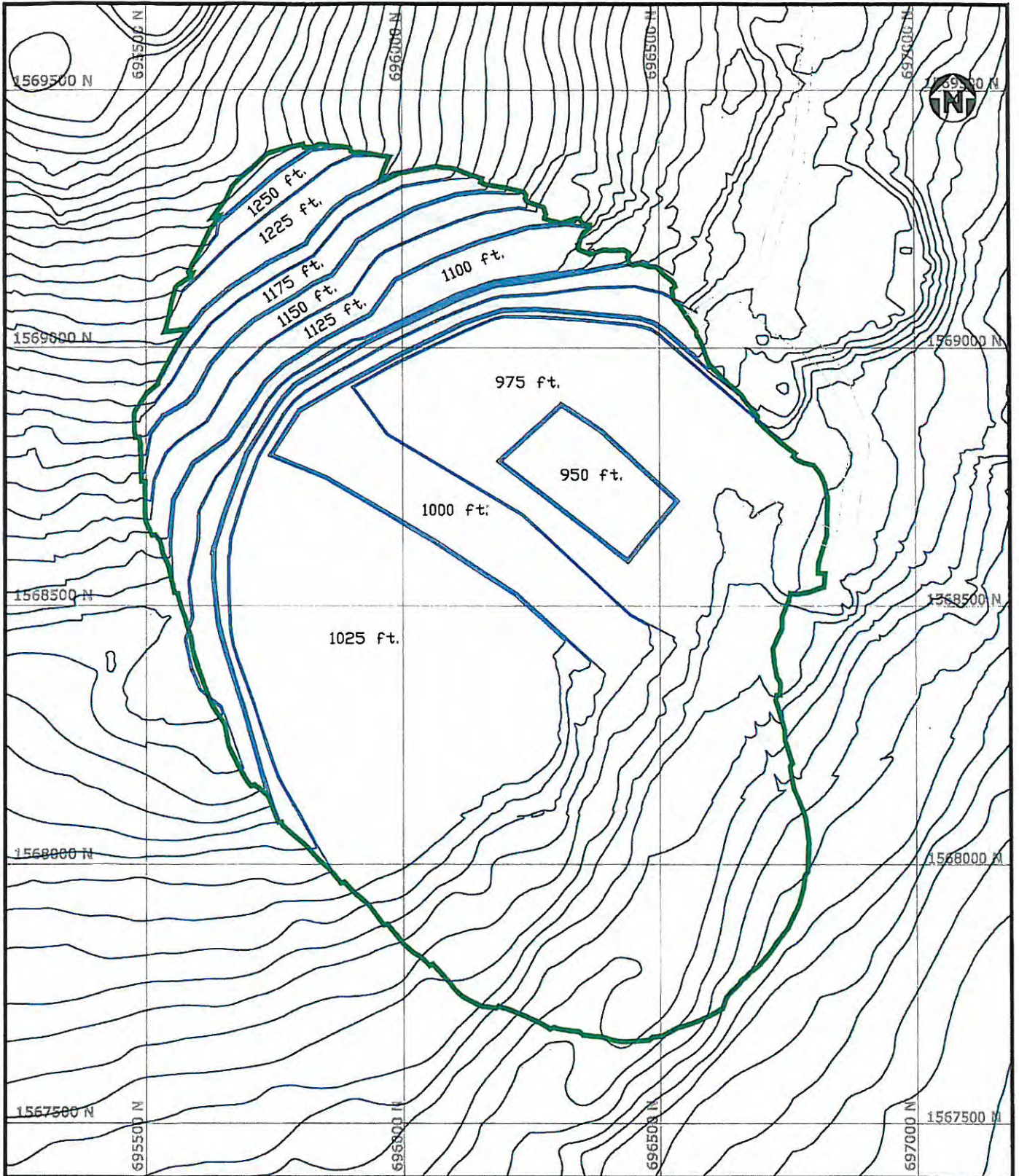


Legend	
	10ft Contour Lines
	Pit Outline
	Roads

This Document was prepared exclusively for NYCO Minerals Inc. by AMEC Americas Limited. The quality of information contained herein is consistent with the level of effort involved in AMEC services and based on: (i) information available at the time of preparation, (ii) data supplied by outside sources, and (iii) the assumptions, conditions and qualifications set forth in this document. This document is intended to be used by NYCO Minerals Inc. only, subject to the terms and conditions of its contract with AMEC. Any other use of, or reliance on, this document by any third party is at that party's sole risk.

PROPRIETARY INFORMATION:
 THIS DRAWING IS THE PROPERTY OF AMEC AMERICAS, LTD. AND IS NOT TO BE LOANED OR REPRODUCED IN ANY WAY WITHOUT THE PERMISSION OF AMEC AMERICAS, LTD.

		COORDINATE SYSTEM N.Y. State Plane, East Zone, 1987 Datum: Feet, ADL, 1929			
PROJECT NO. 152441		PROJECT PHASE		SUBJECT	
BY	YY/MM/DD	SCALE		Oakhill Mine - End of 2016	
APP.		1" = 250'			
CHK.		DRAWING NO.		REV.	
DRN.	RAG 06/09/01	152441-OAK-170-0007		0	
CADD FILE ADDRESS					



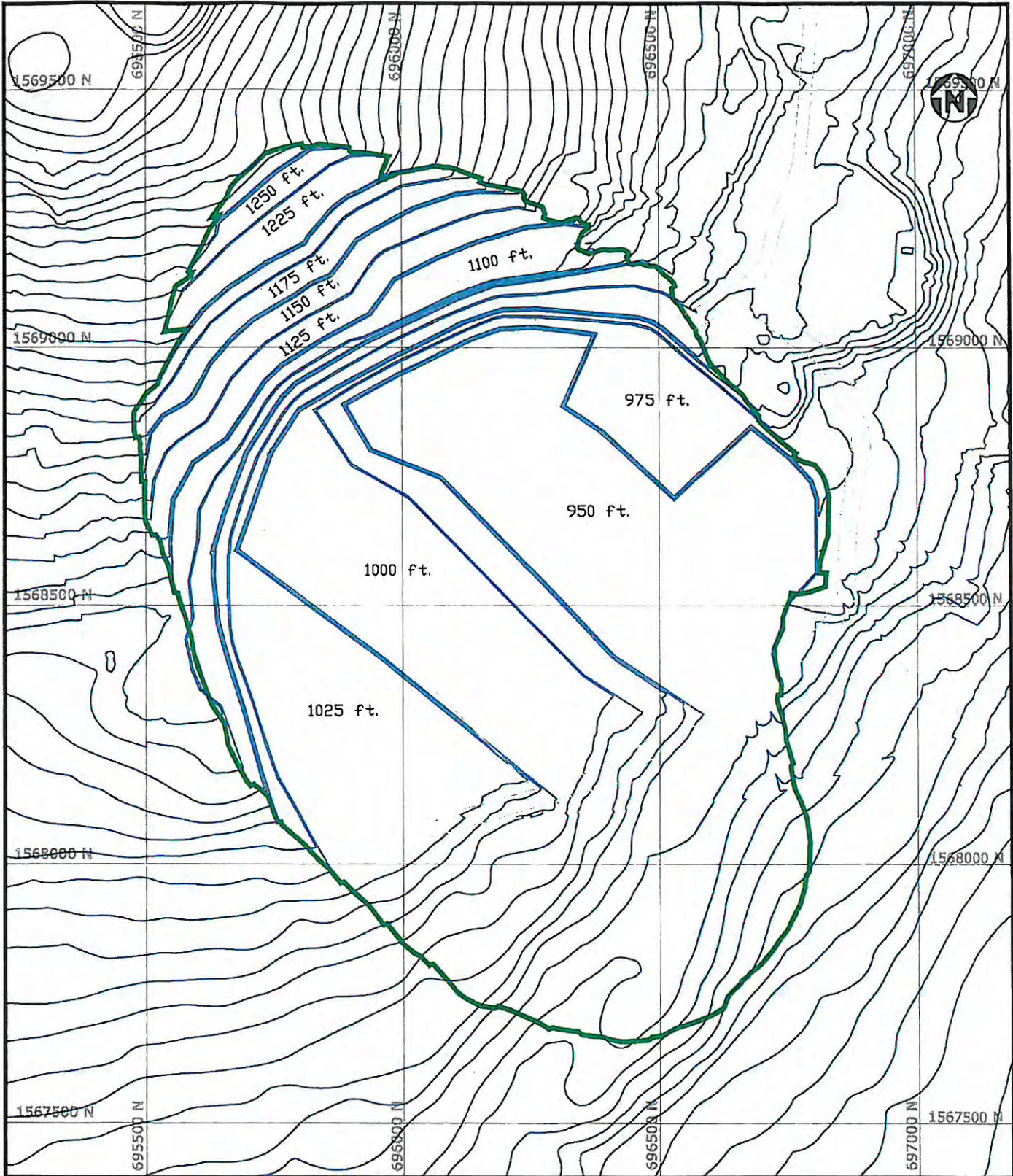
Legend
 --- 10ft Contour Lines
 --- Pit Outline
 --- Roads

This Document was prepared exclusively for NYCO Minerals Inc. by AMEC Americas Limited. The quality of information contained herein is consistent with the level of effort involved in AMEC services and based on: a) information available at the time of preparation, b) data supplied by outside sources, and c) the assumptions, conditions and qualifications set forth in this document. This document is intended to be used by NYCO Minerals Inc. only, subject to the terms and conditions of its contract with AMEC. Any other use of, or reliance on, this document by any third party is at that party's sole risk.

PROPRIETARY INFORMATION:
 THIS DRAWING IS THE PROPERTY OF AMEC AMERICAS, LTD. AND IS NOT TO BE LOANED OR REPRODUCED IN ANY WAY WITHOUT THE PERMISSION OF AMEC AMERICAS, LTD.

		COORDINATE SYSTEM N.Y. State Plane, East Zone, 1927 Datum: Foot A.M.S.L. 1929			
		PROJECT NO. 152441	PROJECT PHASE		SUBJECT
APP.	BY YY/MM/DD	SCALE 1" = 250'		Ockhill Mine - End of 2017	
CHK.		DRAWING NO.			REV.
DRN.	RAG 06/09/01	152441-OAK-170-0008			0

CADD FILE ADDRESS



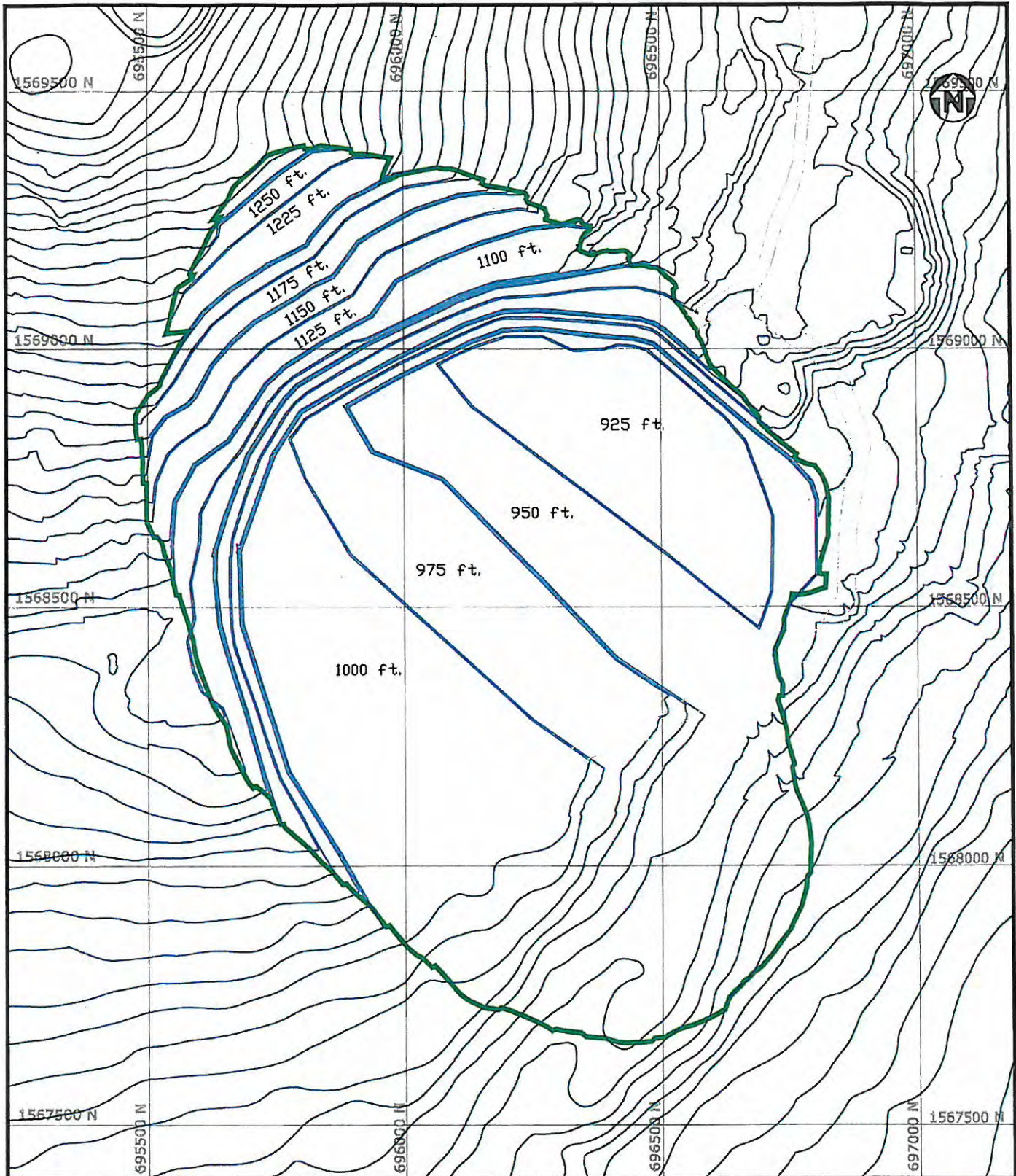
Legend
 --- 10ft Contour Lines
 --- Pit Outline
 --- Roads

This Document was prepared exclusively for NYCO Minerals Inc. by AMEC Americas Limited. The quality of information contained herein is consistent with the level of effort involved in AMEC services and based on: 1) Information available at the time of preparation, 2) data supplied by outside sources, and 3) the assumptions, conditions and qualifications set forth in this document. This document is intended to be used by NYCO Minerals Inc. only, subject to the terms and conditions of its contract with AMEC. Any other use of, or reliance on, this document by any third party is at that party's sole risk.

PROPRIETARY INFORMATION:
 THIS DRAWING IS THE PROPERTY OF AMEC AMERICAS, LTD. AND IS NOT TO BE LOANED OR REPRODUCED IN ANY WAY WITHOUT THE PERMISSION OF AMEC AMERICAS, LTD.

		COORDINATE SYSTEM N.Y. State Plane, East Zone, 1927 Davdson Feet AMSL, 1123			
		PROJECT NO. 152441	PROJECT PHASE		SUBJECT
APP.	BY YY/MM/DD	SCALE 1" = 250'		Oakhill Mine - End of 2018	
CHK.		DRAWING NO. 152441-OAK-170-0009			REV. 0
DRN.	RAG 06/09/01				

CADD FILE ADDRESS



Legend

- 10ft Contour Lines
- PR Outline
- Roads

This Document was prepared exclusively for NYCO Minerals Inc. by AMEC Americas Limited. The quality of information contained herein is consistent with the level of effort involved in AMEC services and based on: 1) information available at the time of preparation, 2) data supplied by outside sources, and 3) the assumptions, conditions and qualifications set forth in this document. This document is intended to be used by NYCO Minerals Inc. only, subject to the terms and conditions of its contract with AMEC. Any other use of, or reliance on, this document by any third party is at that party's sole risk.

PROPRIETARY INFORMATION:
 THIS DRAWING IS THE PROPERTY OF AMEC AMERICAS, LTD. AND IS NOT TO BE LOANED OR REPRODUCED IN ANY WAY WITHOUT THE PERMISSION OF AMEC AMERICAS, LTD.



COORDINATE SYSTEM
 N.Y. State Plane, East Zone, 1927
 Canadian Foot Units, 1929



PROJECT NO.
 152441

PROJECT PHASE

SUBJECT

BY YY/MM/DD

SCALE
 1" = 250'

Oakhill Mine - End of 2019

APP.

DRAWING NO.

REV.

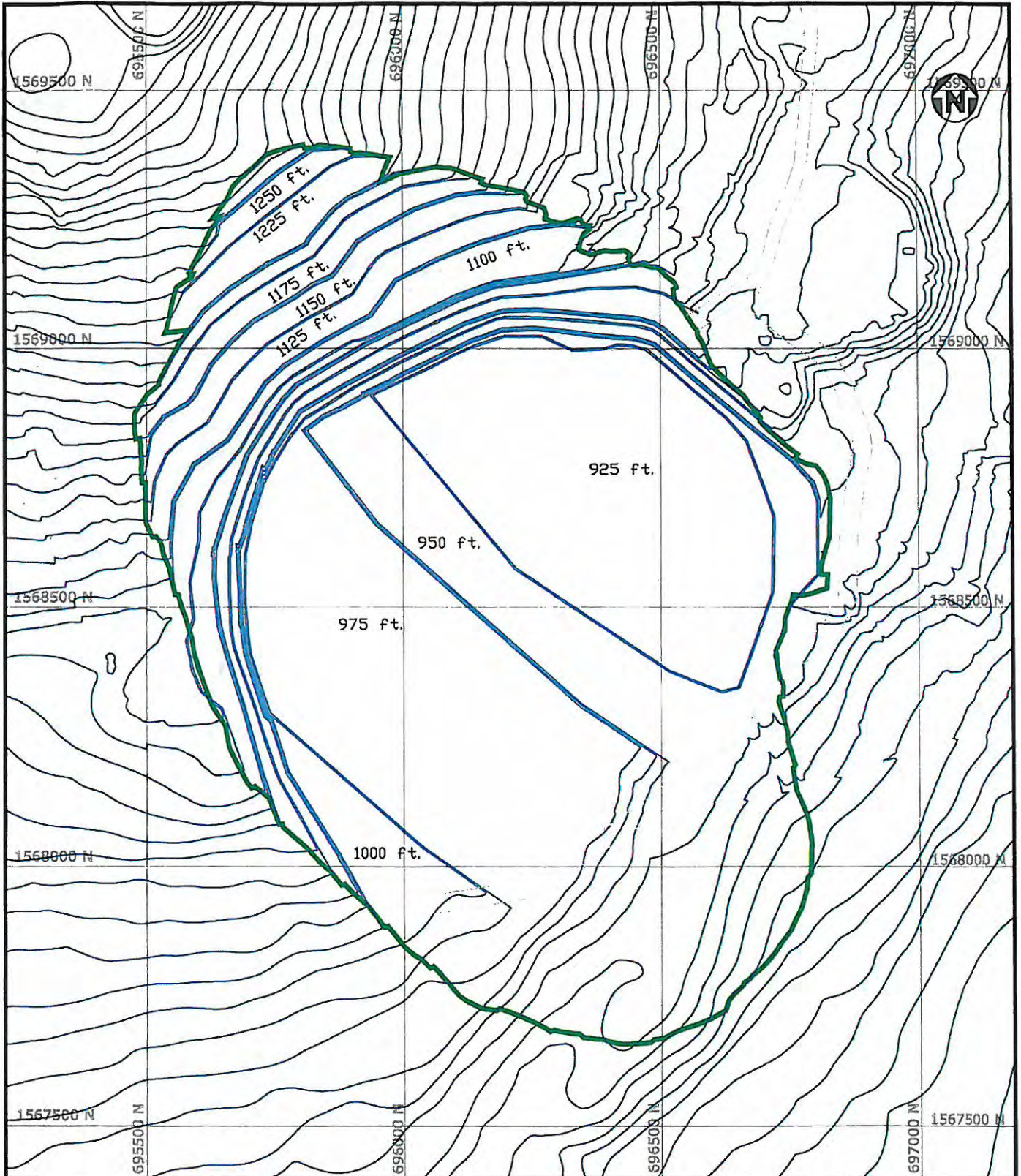
CHK.

152441-OAK-170-0010

0

DRN. RAG 05/09/01

CADD FILE ADDRESS



Legend

- 10ft Contour Lines
- Pit Outline
- Roads

This Document was prepared exclusively for NYCO Minerals Inc. by AMEC Americas Limited. The quality of information contained herein is consistent with the level of effort involved in AMEC services and based on: A) information available at the time of preparation, B) data supplied by outside sources, and C) the assumptions, conditions and qualifications set forth in this document. This document is intended to be used by NYCO Minerals Inc. only, subject to the terms and conditions of its contract with AMEC. Any other use of, or reliance on, this document by any third party is at that party's sole risk.

PROPRIETARY INFORMATION:
 THIS DRAWING IS THE PROPERTY OF AMEC AMERICAS, LTD. AND IS NOT TO BE LOANED OR REPRODUCED IN ANY WAY WITHOUT THE PERMISSION OF AMEC AMERICAS, LTD.



COORDINATE SYSTEM
 NAD 83, State Plane, East Zone, 1983
 Canadian Foot, MSL, 1929



PROJECT NO.
152441

PROJECT PHASE

SUBJECT

APP. BY YY/MM/DD

SCALE
1" = 250'

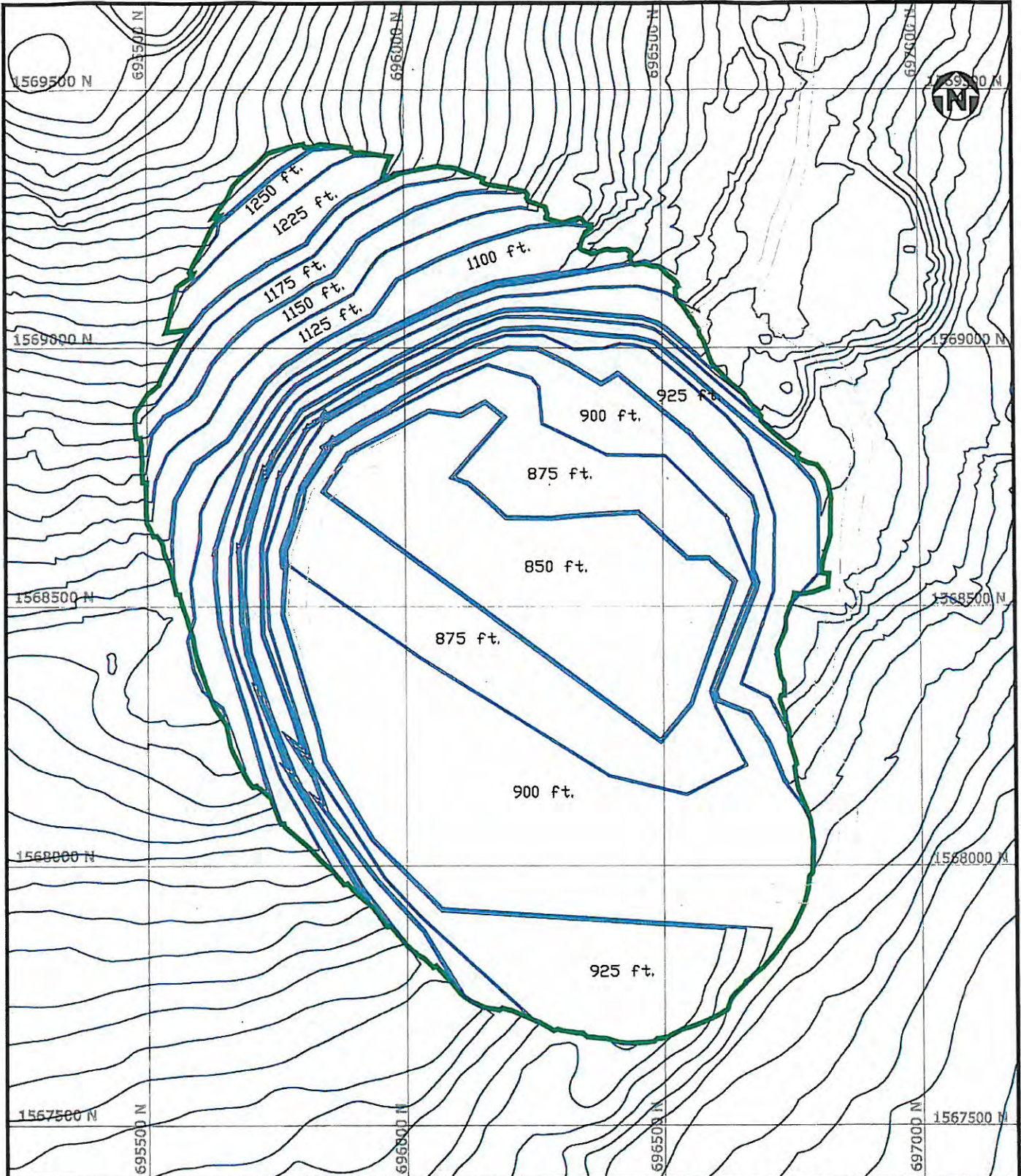
Oakhill Mine - End of 2020

CHK. DRN. RAG 06/09/01

DRAWING NO.
152441-OAK-170-0011

REV.
0

CADD FILE ADDRESS





Legend

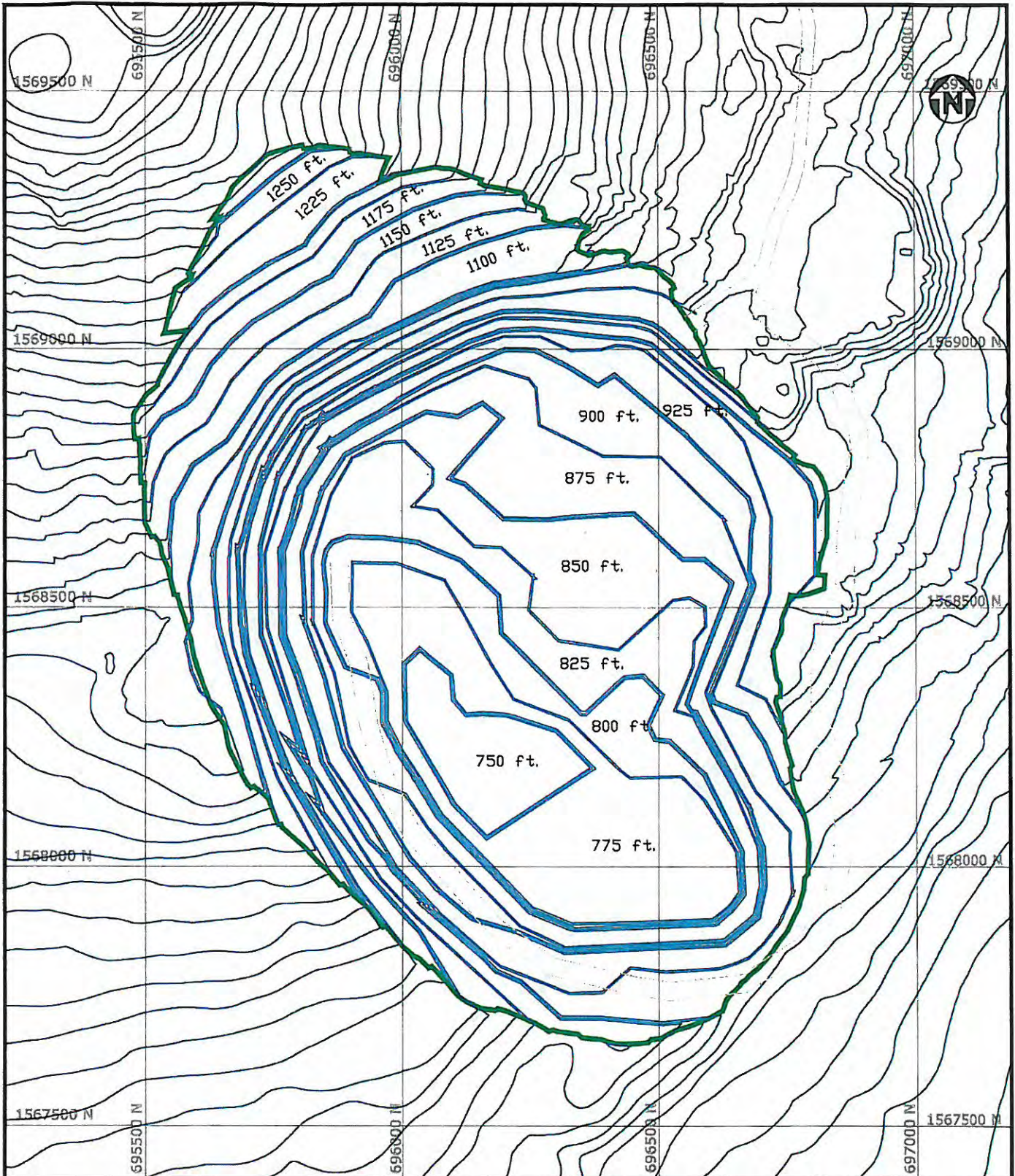
- 10ft Contour Lines
- Pit Outline
- Roads



This Document was prepared exclusively for NYCO Minerals Inc. by AMEC Americas Limited. The quality of information contained herein is consistent with the level of effort provided in AMEC services and based on: a) information available at the time of preparation, b) data supplied by outside sources, and c) the assumptions, conditions and qualifications set forth in this document. This document is intended to be used by NYCO Minerals Inc. only, subject to the terms and conditions of its contract with AMEC. Any other use of, or reliance on, this document by any third party is at that party's sole risk.

PROPRIETARY INFORMATION:
 THIS DRAWING IS THE PROPERTY OF AMEC AMERICAS, LTD. AND IS NOT TO BE LOANED OR REPRODUCED IN ANY WAY WITHOUT THE PERMISSION OF AMEC AMERICAS, LTD.

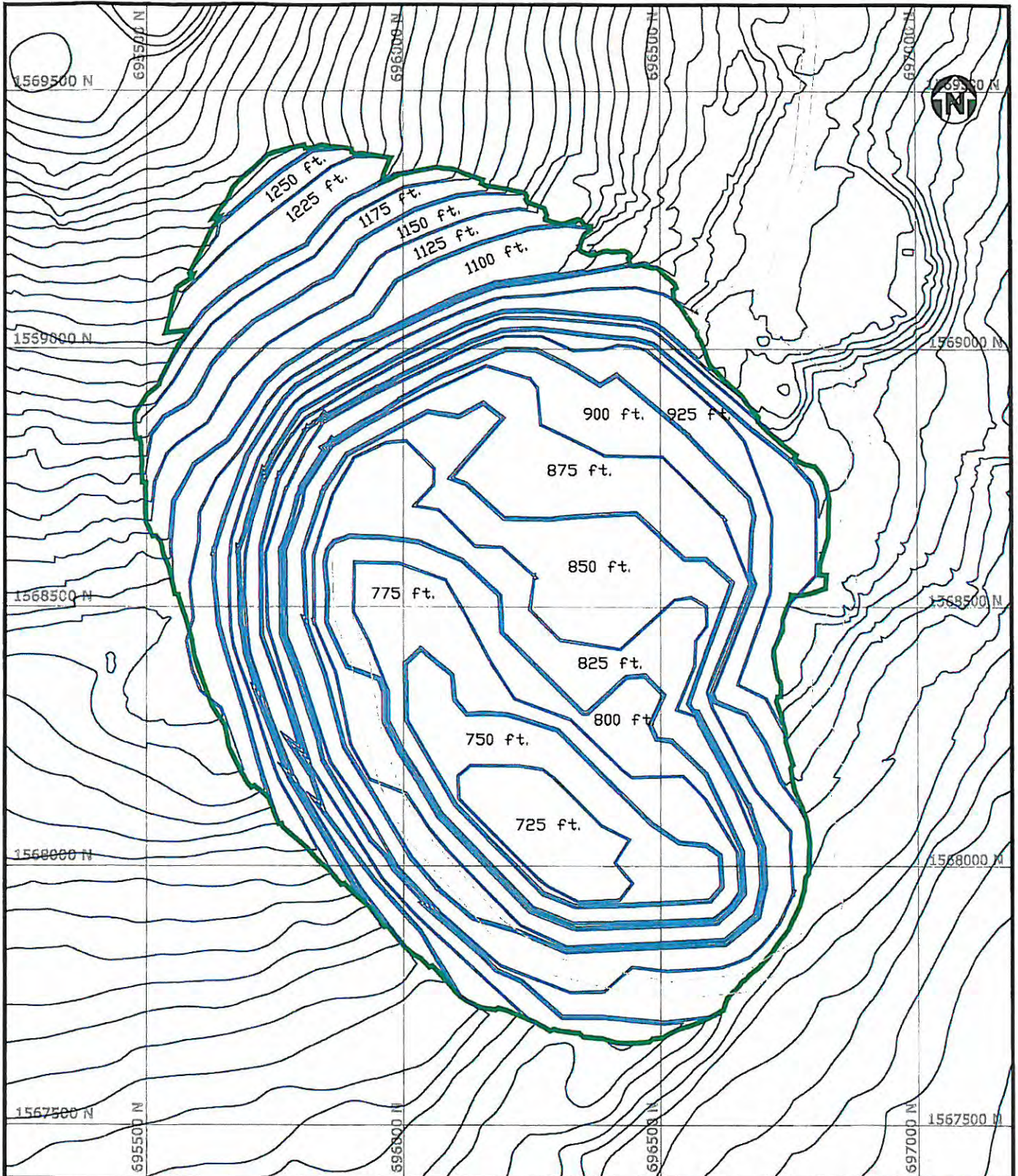
 PROJECT NO. 152441		COORDINATE SYSTEM N.Y. State Plane, East Zone, 1987 Datum: Foot MSL, 1929		 SUBJECT Oakhill Mine - End of 2025
		PROJECT PHASE		
APP.	BY YY/MM/DD	SCALE 1" = 250'		REV. 0
CHK.		DRAWING NO. 152441-OAK-170-0012		
DRN.	RAG 06/09/01			



CADD FILE ADDRESS



Legend — 10ft Contour Lines — Pit Outline — Roads	<p><i>This Document was prepared exclusively for NYCO Minerals Inc. by AMEC Americas Limited. The quality of information contained herein is consistent with the level of effort involved in AMEC services and based on: a) information available at the time of preparation, b) data supplied by outside sources, and c) the assumptions, conditions and qualifications set forth in this document. This document is intended to be used by NYCO Minerals Inc. only, subject to the terms and conditions of its contract with AMEC. Any other use of, or reliance on, this document by any third party is at that party's sole risk.</i></p> <p>PROPRIETARY INFORMATION: THIS DRAWING IS THE PROPERTY OF AMEC AMERICAS, LTD. AND IS NOT TO BE LOANED OR REPRODUCED IN ANY WAY WITHOUT THE PERMISSION OF AMEC AMERICAS, LTD.</p>	 PROJECT NO. 152441	COORDINATE SYSTEM N.Y. State Plane, East Zone, 1927 Deviation Foot AMSL, 1928	 SUBJECT Oakhill Mine - End of 2030
			PROJECT PHASE SCALE 1" = 250'	
APP.	BY YY/MM/DD	CHK.	DRAWING NO. 152441-OAK-170-0013	DRN. RAG 06/09/01

CADD FILE ADDRESS



Legend — 10ft Contour Lines — Pit Outline — Roads	<p><i>This Document was prepared exclusively for NYCO Minerals Inc. by AMEC Americas Limited. The quality of information contained herein is consistent with the level of effort involved in AMEC services and based on: a) information available at the time of preparation, b) data supplied by outside sources, and c) the assumptions, conditions and qualifications set forth in this document. This document is intended to be used by NYCO Minerals Inc. only, subject to the terms and conditions of its contract with AMEC. Any other use of, or reliance on, this document by any third party is at that party's sole risk.</i></p> <p>PROPRIETARY INFORMATION: THIS DRAWING IS THE PROPERTY OF AMEC AMERICAS, LTD. AND IS NOT TO BE LOANED OR REPRODUCED IN ANY WAY WITHOUT THE PERMISSION OF AMEC AMERICAS, LTD.</p>		COORDINATE SYSTEM N.Y. State Plane, East Zone, 1927 Elevations Foot, AMSL, 1928		
			PROJECT NO. 152441	PROJECT PHASE	
APP.	BY YY/MM/DD	SCALE 1" = 250'	DRAWING NO. 152441-OAK-170-0014	REV. 0	
CHK.	DRN. RAG 06/09/01	CADD FILE ADDRESS			