



20% in 2023

An assessment of the New York State 30 by 30 Act



PROTECT 
THE ADIRONDACKS!



Acknowledgements: Protect the Adirondacks is grateful to Joseph Robert Foundation and Horne Family Foundation for their generous support.



20% in 2023

An assessment of the New York State 30 by 30 Act

Written and Researched by
Peter Bauer, Claudia Braymer,
James McMartin Long, Stephen Signell

Published by Protect the Adirondacks!, Inc.
PO Box 48, North Creek, NY 12853 (518) 251-2700
www.protectadks.org info@protectadks.org

All Rights Reserved ©
2023



Introduction

In 2022, Governor Kathy Hochul signed the “30 by 30” law, which establishes a conservation goal for New York State of protecting 30% of the State’s “lands and inland waters” by the year 2030. This landmark environmental protection legislation enjoyed broad bipartisan support, passing the State Senate by a vote of 58 to 3, and the State Assembly by a vote of 137 to 8. The 30 by 30 law commits New York to do its part to reach a similar national goal established by President Joe Biden in 2021 (to protect 30% of the nation’s lands and waters by 2030) and is a major step forward to protect New York’s open spaces, forests, and wetlands, which are cornerstones of the State’s long-term climate resilience and mitigation efforts. It is also an important step on the road to fulfilling legendary ecologist E.O. Wilson’s vision of keeping half of the earth as protected, intact, wild, and natural systems.

The 30 by 30 legislation requires the Department of Environmental Conservation (DEC) to prepare a plan by July 1, 2024, that shows how much of New York State’s lands and waters are currently conserved and the amount that needs to be protected in the years ahead to meet the 30% by 2030 goal. The DEC is drafting this plan in concert with the Office of Parks, Recreation, and Historic Preservation (OPRHP).

The 30 by 30 Act states: “It shall be the goal of the state to support and contribute to national efforts to conserve at least thirty percent of United States lands and inland waters and at least thirty percent of United States ocean areas by the year two thousand thirty.” Protect the Adirondacks has evaluated what it means to conserve lands and waters in New York and assessed the status of current protected lands and waters across the state. New York State encompasses 31,369,853 acres of land and inland waters.

Protect the Adirondacks’ analysis concludes that



6,220,150 acres (see page 4) of lands and waters are currently protected in a variety of ways, creating a legacy and heritage of ambitious land conservation. These wild places include 2.9 million acres of Forest Preserve in the Adirondack Park and Catskill Park; over 850,000 acres of state-held conservation easements; over 700,000 acres of State Forests; nearly 350,000 acres of State parklands; and over 235,000 acres of municipal park lands, county forests, and watershed lands. Other protected areas include conservation easements and lands owned by land trusts and conservation organizations, totaling approximately 500,000 acres, and agricultural easements held by the State totaling over 100,000 acres. Changes to the State's Freshwater Wetlands Act in 2022 could also add significant wetland acreage to protected areas in New York.

The 30 by 30 legislation builds upon the multi-generational and bipartisan legacy of land protection by New York State, which has been in the land protection business in a serious way for over 175 years. Efforts to build Central Park in Manhattan and Prospect Park in Brooklyn started in the 1850s. In 1864, there was a call to protect the vast wildlands in the Adirondacks to create a “central park for the world.” Van Cortlandt Park in the Bronx was started in the 1870s at the same time that Upstate cities, like Rochester and Albany, built large public parks. In 1885 the Forest Preserve was created in the Adirondacks and Catskills. That year also saw the creation of the Niagara Reservation, which later became Niagara Falls State Park in the

early 20th century. In 1892, the Adirondack Park was created, followed by the Catskill Park in 1904. Bear Mountain State Park opened in 1913 and dozens of parks have followed.

The constitutional “Forever Wild” protections for the Forest Preserve and the State parks system, the passage of a half dozen environmental bond acts to protect land, and creation of the Environmental Protection Fund show that New Yorkers have always placed a high value on land protection, generation after generation. In order to reach the goal of protecting 30% of New York's lands and waters, a total of 9,410,956 acres, some 3,190,806 acres will need to be protected by 2030. Reaching this goal will be a monumental challenge for New York State and requires a sustained commitment from State leaders, State agencies, land trusts and conservation organizations, and local governments in all corners of the state.

What Lands are Protected?

Protect the Adirondacks conducted a statewide assessment of the status of protected lands in New York. The first thing we did was determine what it means for land or water to be conserved. We looked at different categories of lands across New York and determined that in order to be considered conserved lands must be permanently protected, subject to some form of legal limitation on development or conversion to other uses. To do this analysis we looked at the Real Property Tax Assessment Rolls for all communities across the state and various open-source GIS data. In our assessment of protected lands, we identified 12 categories totaling 6,220,150 acres that enjoy some form of permanent legal protection and should count towards the goal of protecting 30% of lands by 2030. Following is a detailed list and explanation of these categories.

Adirondack and Catskill Forest Preserves: Created in 1885, and granted “forever wild” protection in the State Constitution in 1894, Forest Preserve lands are located in counties of the Adirondack and Catskill

New York State Protected Land Areas	Protected Acres	% Protected Lands	% NYS Lands
Adirondack and Catskill Forest Preserves	2,932,161	47.14%	9.35%
New York State Forests	779,632	12.53%	2.49%
New York State Parks	342,741	5.51%	1.10%
Municipal Lands	235,865	3.79%	0.75%
Non-Governmental Organization (NGO) Lands	143,536	2.31%	0.46%
Federal Lands	168,199	2.70%	0.54%
Other New York State Owned Lands	263,676	4.24%	0.84%
Miscellaneous Protected Lands	18,424	0.30%	0.05%
NYS Agricultural Conservation Easements	95,360	0.15%	0.30%
NYS Working Forest/Public Access Conservation Easements	861,630	13.85%	2.75%
NGO Conservation Easements	310,013	5.00%	0.99%
NYC Watershed Conservation Easements	68,918	1.10%	0.22%
Totals	6,220,150		20%
<i>Data: 2022 NYS Real Property Tax Assessment Rolls, NYS Department of Taxation, NY Natural Heritage Trust. Data from NYS Real Property Tax Assessment Rolls are highly variable and inconsistent in categorization of lands from town to town.</i>			

Parks and are managed by the DEC. The Forest Preserve is protected by Article 14 of the New York State Constitution, which states that these lands cannot be leased, sold or exchanged, and that Forest Preserve trees cannot be sold, removed or destroyed. In every decade since 1885, the State has purchased additional lands to add to the Forest Preserve.

New York State Forests: These State-owned forestlands are managed by DEC and located outside of the Adirondack and Catskill Parks. They are primarily used for public recreation, but some are managed for State-supervised timber production, which does not conflict with our definition of “protected” because the land cannot lawfully be developed for other purposes. However, approximately 4% of the nearly 780,000 acres of State Forests are subject to oil and gas exploration and development, and therefore do not meet the definition of “protected.” There are dozens of State Forests areas throughout the state.

New York State Parks: These are State-owned lands and waters, managed by OPRHP, and include more than 250 parks, historic sites, and recreational areas.

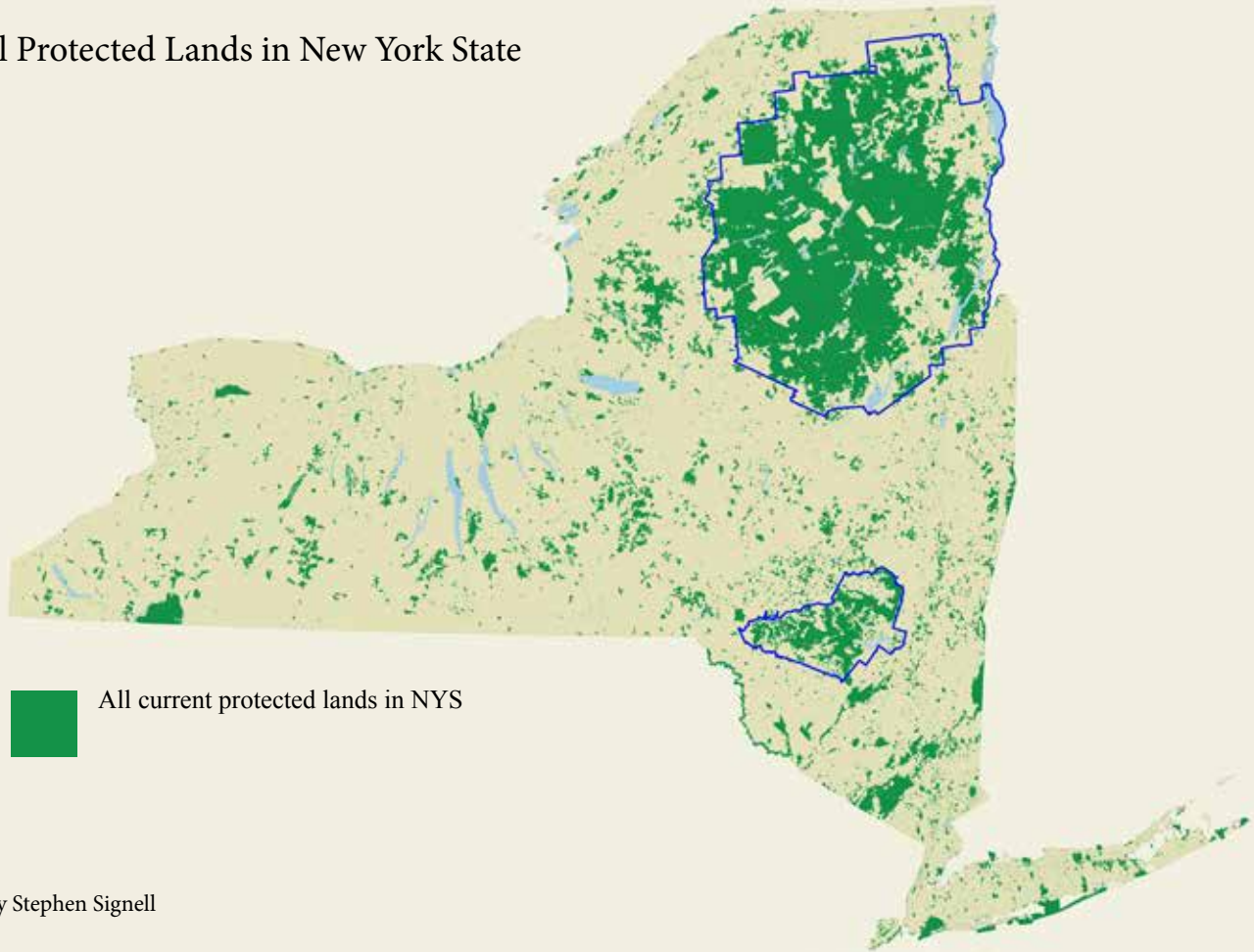
Municipal Lands: These are lands owned by a municipality for conservation purposes, such as parks, forests, watersheds, beaches, and open space.

Non-Governmental Organization (NGO) Lands: These are lands owned by a bona fide NGO, designated as a tax-exempt public charity under Section 501(c)(3) of the Internal Revenue Code, for conservation or natural resource protection.

Federal lands: Federal lands in New York total over 168,000 acres. These lands includes the 16,212-acre Finger Lakes National Forest, the 23,000-acre Montezuma National Wildlife Refuge, the 19,000-acre Fire Island National Seashore, 30,000-acre Upper Delaware Scenic and Recreational River (Delaware Water Gap), 3,000-acre Oyster Bay National Wildlife Refuge, among dozens of other lands.

Other New York State Owned Lands: The State also manages State Wildlife Refuges, and State Wildlife Management Areas lands owned by Public Authorities, or lands owned by the NYS Power Authority, among other land types.

All Protected Lands in New York State



Miscellaneous Protected Lands: This is a small amount of lands classified under the Real Property Tax Assessment Rolls as protected or State-owned.

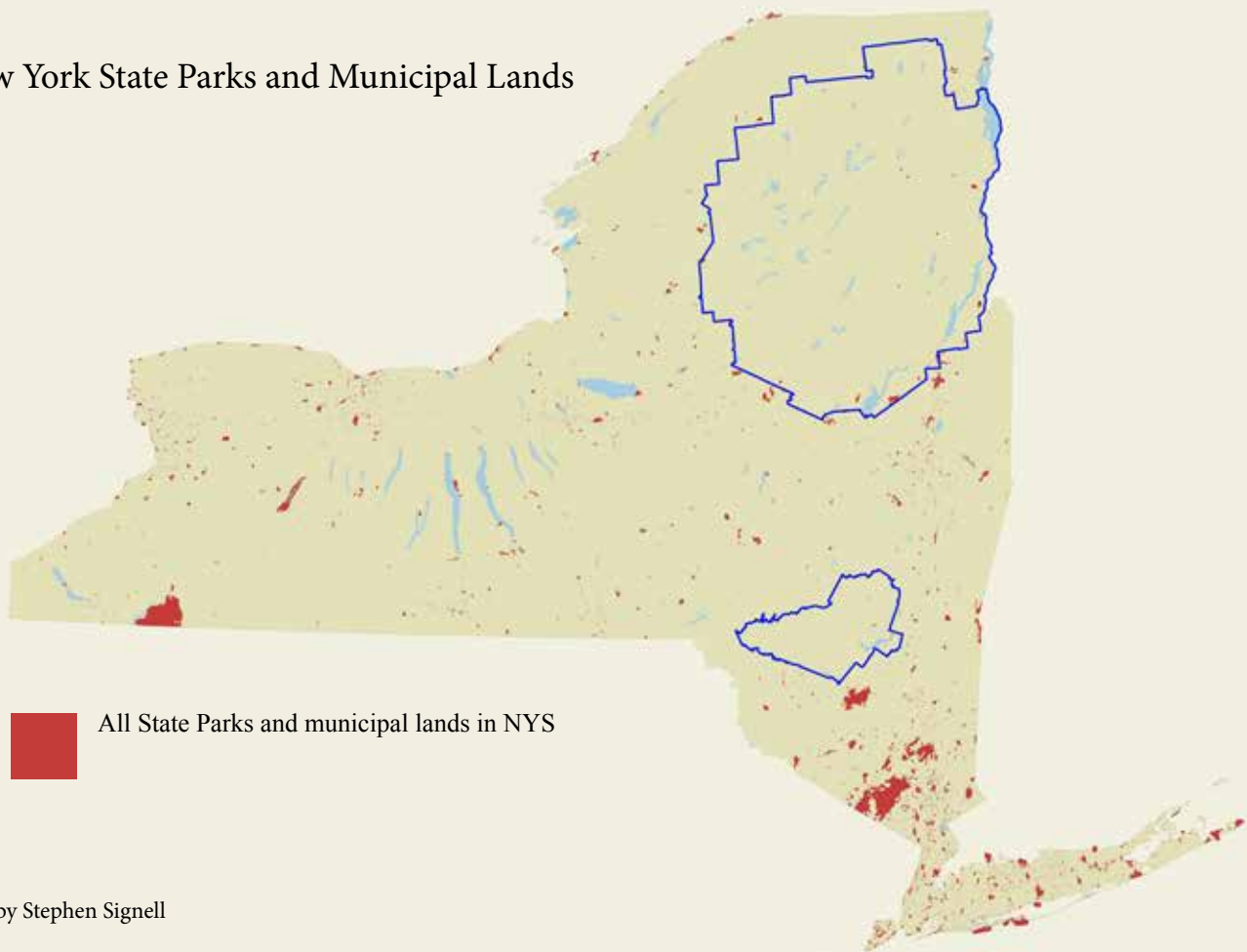
New York State Agricultural Conservation Easements: These are private lands on which the State owns certain rights in perpetuity. The legal rights owned by the State typically conserve viable agricultural lands and preclude the private landowner from converting those lands to non-farm uses, and may also include public access, open space, scenic views, historic sites, and other natural resource protection rights. An Agricultural Conservation Easement allows the landowner to conduct sustainable agricultural practices on the property. Data provided from NYS Department of Agriculture and Markets listed individual easements totaling 95,360 acres. Ag and Markets stated that this was not the entire list of such easements, but

a complete list was not available. Press Releases from Governor Hochul have cited a figure of 107,000 acres.

New York State Working Forest and Public Access Conservation Easements: These are private lands on which the State owns certain rights in perpetuity. The legal rights owned by the State may include public access, open space, scenic views, historic sites, and natural resource protection rights, and may preclude the private landowner from developing some or all of the property. A Working Forest Conservation Easement generally allows the landowner to sustainably manage the timber on the property under the supervision of a professional forest management program.

Non-Governmental Organization (NGO) Conservation Easements: These are private lands on which a bonafide NGO, qualified under Article 49, Title 3, of

New York State Parks and Municipal Lands



the New York State Environmental Conservation Law (ECL), to receive and hold a conservation easement, owns certain rights to the property in perpetuity. The legal rights owned by the NGO may include public access, open space, scenic views, historic sites, and natural resource protection rights and preclude the private landowner from developing some or all of the property. Specified activities such as forest management, agriculture, and recreation, are often allowed.

New York City Watershed Conservation Easements:

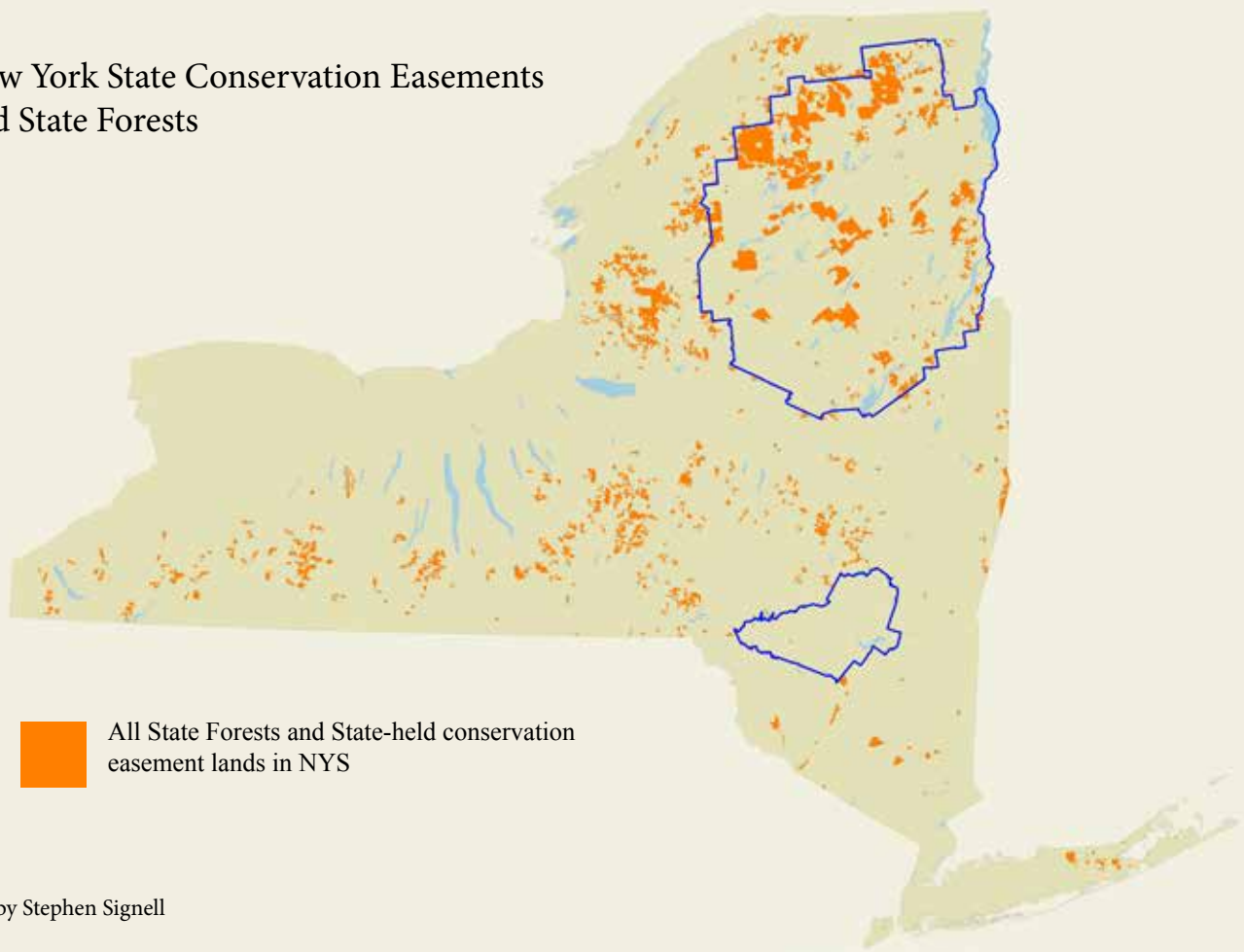
These are private lands on which New York City owns certain rights to the property in perpetuity. The legal rights owned by New York City generally include rights that restrict development activities on and around the watershed lands and waterbodies on the property for the purpose of protecting/improving water quality. The landowner may be allowed to continue

certain uses of the property, such as houses, garages and barns, and may retain rights for forest management and recreational activities on the property.

While laws could be changed, the public lands listed as protected in this report would have to undergo a significant public review process prior to any change in their status. For example, the constitutional provisions protecting the 2.9-million-acre Forest Preserve can only be changed through a lengthy constitutional amendment process that includes passage in two consecutive legislative sessions and approval in a state-wide referendum. Local governments cannot alienate municipal parklands without the approval of the State Legislature. Land Trusts are governed by national policies that prioritize permanent protection of land.

Protect the Adirondacks is concerned that the State

New York State Conservation Easements and State Forests



may try to inflate the amount of currently protected lands in New York through loose or expansive definitions of what the term “protected” means. For instance, will the State claim that all of the lands within the 6-million-acre Adirondack Park are protected because private lands in the Park are subject to regional land use controls under the Adirondack Park Agency Act? The Adirondack Park includes state and town highways and fully developed communities like Lake Placid, Lake George, and Saranac Lake. Will the State argue that all surface waters of the state’s lakes and ponds are protected? Are lake bottom lands protected? Are coastal waters protected? Do lands zoned with various restrictive laws count as protected? Will lands that are enrolled in Preferential Forest Tax Law programs, commonly referred to as “480” and “480-A” lands, count as protected? These are important questions to determine the calculation of protected lands.

3 Million Acres to Go

Protect the Adirondacks’ analysis concluded that approximately 20% of New York’s lands and inland waters is protected in 2023, some 6,220,150 acres. Thus, we believe that an additional 3,190,806 acres will need to be protected by 2030 in order to reach the statutory goal of the 30 by 30 law. DEC and OPRHP recently announced that work has begun to update the New York State Open Space Conservation Plan. Regional Advisory Committees have formed and are preparing land lists and a draft updated plan will be released for public hearings in 2024. With the State committed to protecting another nearly 3.2 million acres by 2030, the 30 by 30 law should play a major role in the focus and objectives of the updated Open Space Plan.



Question of Protected Wetlands

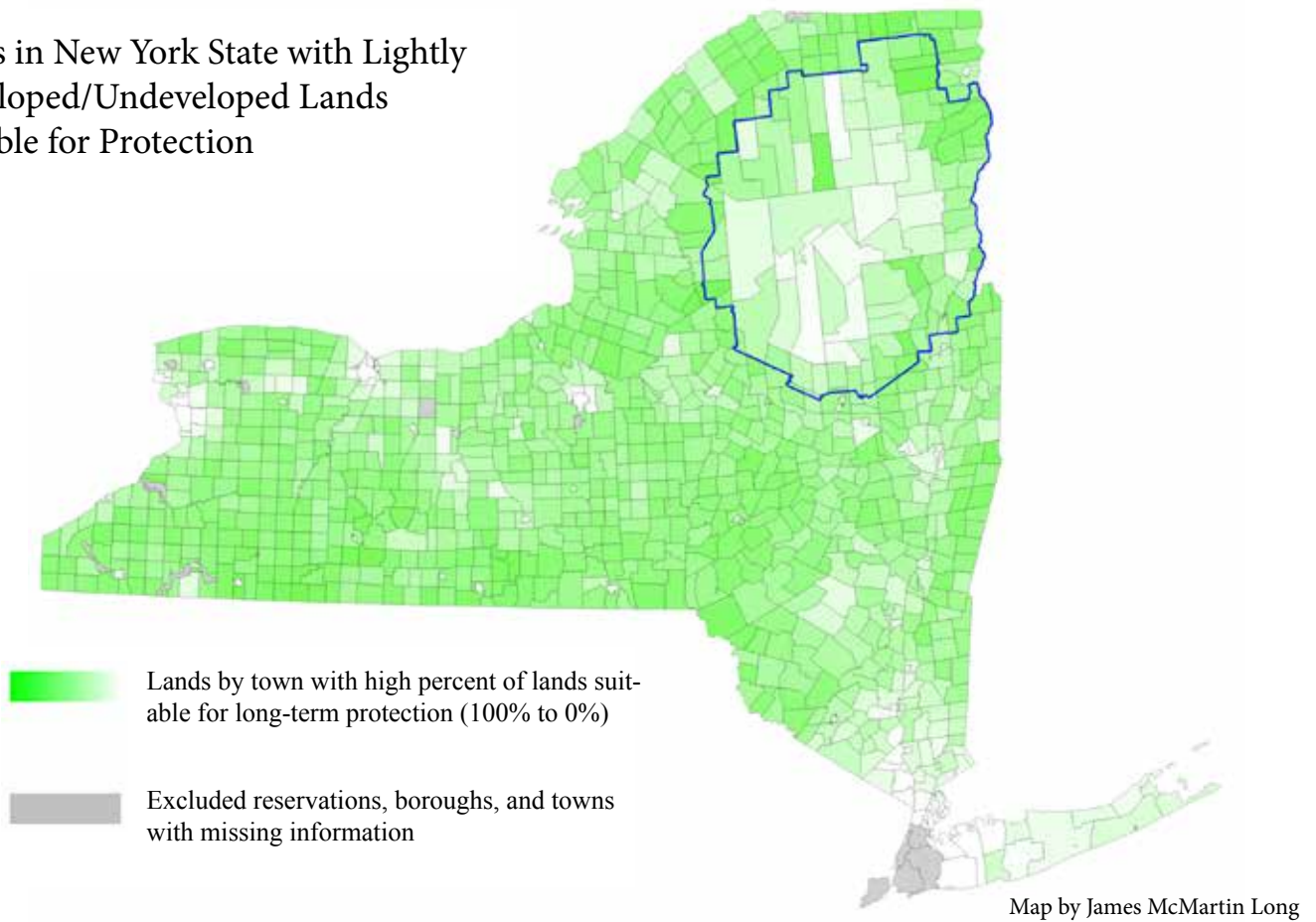
There are an estimated 2.4 million acres of wetlands in New York, comprising just under 8% of the State's total land area. Of these, over 900,000 acres of wetlands are in the Adirondack Park, over 150,000 acres are in the Hudson Valley, over 400,000 acres are in the Appalachian-Hudson Highlands, and over 880,000 acres are associated with lake plain systems in the Finger Lakes and Great Lakes. Hundreds of thousands of acres of wetlands located in the Forest Preserve and on State working forest easements are protected. The most common wetland cover type across New York is forested (70%), followed by shrub/scrub (16%), emergent (9%), and wetland open water (5%).

The New York State Freshwater Wetlands Act (FWA) was passed in 1975. In 2022 the FWA was amended to reduce the threshold for a regulated wetland from 12.4 acres to 7.4 acres starting in 2028 and allows for even smaller wetlands of "unusual importance" to be protected through regulation. Proponents of the amendments noted that the 2022 changes would protect an

additional one million acres of wetlands in New York. However, it is important to note that the FWA does not prohibit development in or adjacent to wetlands; rather, it imposes a permit requirement for most types of development occurring in and around wetlands.

The DEC is now drafting criteria for determining which small wetlands will qualify for classification as being of "unusual importance" and thus subject to permitting requirements. When these rules are finalized and the wetland minimum size level is dropped to 7.4 acres in 2028, it will be interesting to evaluate what percent of the state's 2.4 million acres of wetlands will actually be permanently protected. It will also be interesting to see if the State considers regulated wetlands to be "protected" within the meaning of the 30 by 30 legislation and, if so, the basis for that determination. In Protect the Adirondacks' experience, status as a regulated wetland under the FWA does not necessarily mean protection. For example, the Adirondack Park Agency, which administers and enforces the FWA in the Adirondack Park, recently approved a major expansion of a commercial marina affecting thousands of square feet of protected wetlands without even requiring submission of a wetland permit application.

Areas in New York State with Lightly Developed/Undeveloped Lands Suitable for Protection



Opportunities for Land Protection Exist Across New York State

According to research by Protect the Adirondacks, there are over 12 million acres of currently unprotected open space across New York State in approximately 253,000 parcels ranging in size from 10 acres to over 100 acres. These parcels present a golden opportunity for the State to protect significant acreages of forestlands and unique habitats that can help the State meet its 30 by 30 goal.

According to the Real Property Tax Assessment Rolls, lands in parcels measuring between 10 to 25 acres in size, and classified as lightly developed or as open space, total over 1.7 million acres. This land base exists

in over 111,000 individual parcels. Lands classified as open space in parcels measuring 25 to 50 acres total 2.33 million acres, and are distributed in over approximately 65,000 parcels. Lands classified as open space in parcels measuring 50 to 100 acres total 3.44 million acres, and are distributed in over 49,000 parcels. Lands classified as open space in parcels measuring over 100 acres total over 4.85 million acres, and are distributed in over 28,000 parcels.

Given the undeveloped open spaces that remain across New York State, the land base clearly exists to meet the 30 by 30 goal and permanently protect lands from future development. To reach the State's 30 by 30 goal, new lands will need to be protected through a variety of programs. State leaders need to re-ignite land protection at state agencies and explore new programs that protect open spaces.



Recommendations

To meet the 30 by 30 goal to conserve 30% of New York State's land and inland waters by 2030, a total of 3,190,806 acres will need to be protected. This is an audacious objective for State leaders and communities across New York. Protect the Adirondacks believes that this goal is attainable for the State of New York and can be accomplished through a number of different programs and with a number of different partners.

1. **The Hochul Administration Should Set a Goal of Protecting 1,000,000 Acres through State Acquisition by 2030.**

There is precedent for accelerated state action on land protection. The Pataki Administration pro-

tected over 1 million acres across New York in a 10-year period in the late 1990s through 2006. The goal of acquiring 1 million acres can be achieved by purchasing lands in fee and conservation easements. For example, the 1-million-acre goal can be achieved by expanding the Forest Preserve by 250,000 acres, State Parks by 75,000 acres, State Forests and other state lands by 100,000 acres, Working Forest Conservation Easements by 500,000 acres, and agricultural easements by 75,000 acres. The 2022 Clean Water, Clean Air and Green Jobs Environmental Bond Act has approximately \$2.275 billion in funding that is allocated to protect lands and waters in New York State, and the \$400 million Environmental Protection Fund is also a source of annual funding for land purchases. Significant new land protection funding will also be necessary between now and 2030.



2. New Open Space Conservation Plan Should Make 30 by 30 its Top Priority.

The New York State Open Space Conservation Plan is currently in the early stages of revision. The first plan was approved in the early 1990s and last updated in 2016. The Open Space Plan is built on the work of nine Regional Advisory Committees made up of local government officials and various individuals selected by state agencies. The new Open Space Plan should have as its stated priority a commitment to achieve the State's 30 by 30 goal.

3. The Adirondack Park Plays a Key Role in Meeting the 30 by 30 Goal.

The Adirondack Park contains large tracts of undeveloped and unprotected lands that would benefit from protection as additions to the Forest Preserve

or by conservation easement. State planning for meeting the 30 by 30 goal should spotlight the key role that the Adirondack Park can play in meeting the state's land conservation goals. From the 36,000-acre Whitney Park tract to the large tracts of commercial forestlands, there are critical opportunities for land protection that would enhance public access, expand Wilderness areas, and preserve managed forestlands. Land protection in the Adirondack Park is an investment in the economy and environment in the Adirondack Park and in the future of New York.

4. Merge 30 by 30 Goals with New York's Climate Action Plan to Protect Nearly 2 Million Acres by 2030.

The goals of the 30 by 30 law should be merged with the state's Climate Action Plan prepared un-

der the Climate Leadership and Community Protection Act (CLCPA). Land protection should be a cornerstone of CLCPA planning complementing expansion of alternative energy sources, conservation, and improving the state's transmission and electrical grid. One weakness of the state's Climate Action Plan is the absence of a private forest land management program where lands are permanently protected by some form of "forever wild" state easement for the purpose of carbon sequestration and long-term carbon storage. New York needs this type of program because there are many forestland owners across the state who are not interested in managing their lands for commercial forestry and would be interested in a state program providing payments and long-term tax benefits in exchange for permanent open space protection and carbon storage. Our research estimates that there are over 12 million acres of lands that are lightly developed or in open space and would be suitable for this type of program. The state should set a goal of protecting two million acres through a new climate-change-based forest management program. Such a program would meet objectives for both 30 by 30 and the CLCPA.

The State Comptroller, Attorney General, and DEC Commissioner need to streamline State land acquisition procedures to shorten the time that it takes to complete a purchase.

5. Land Trusts and Private Institutions in New York Should Protect Over 190,000 Acres.

As part of the New York State's 30 by 30 goal, land trusts and private organizations should permanently protect over 190,000 additional acres by 2030. These lands enjoy flexibility in the conservation management that allow private uses, and some public uses, yet protect the land's most important natural resources.

6. State Agencies Need to Improve and Streamline Land Purchasing Procedures.

The Department of Environmental Conservation needs to add additional staff to its Real Property Office to improve the State's ability to buy lands.



Conclusion

Protect the Adirondacks has identified over 6.2 million acres of protected lands out of the 9.4 million acres that need to be protected to meet the 30 by 30 statutory goal of protecting 30% by 2030. There are 12 million acres of unprotected open space lands across New York that offer prime opportunities for protection to reach the 30 by 30 goal. The revised New York State Open Space Conservation Plan can set the blueprint for the State's acquisition of 1 million acres of lands and waters, with a particular focus on the Adirondack Park. Another 2 million acres of land can be protected by creating incentives for private landowners to preserve forests to meet the climate change goals in New York's Climate Action Plan and through protection actions by private land trusts and other NGOs. There is a clear pathway for the State of New York to protect another 3.2 million acres and reach the goal set forth in the 30 by 30 legislation.

Protected Lands Across New York State by County

The following pages provide charts of the protected lands for each of the 62 counties in New York.

Albany County	
Total Area: 341,097 acres	
Total Protected Land and Water Area: 39,223 acres	
% of Albany County Lands and Waters Protected: 11.5%	
	Acres
Adirondack and Catskill Forest Preserves	0 acres
New York State Forests	3,947
New York State Parks	2,512
Municipal Lands	2,949
Non-Governmental Organization (NGO) Lands	4,394
Federal Lands	1
Other New York State Owned Lands	7,776
Miscellaneous Protected Lands	8,079
NYS Agricultural Conservation Easements	20
NYS Working Forest/Public Access Conservation Easements	36
NGO Conservation Easements	9,509
NYC Watershed Conservation Easements	0
Totals	39,223

Alleghany County	
Total Area: 662,429 acres	
Total Protected Land and Water Area: 56,663 acres	
% of Alleghany County Lands and Waters Protected: 8.6%	
	Acres
Adirondack and Catskill Forest Preserves	0
New York State Forests	46,363
New York State Parks	414
Municipal Lands	410
Non-Governmental Organization (NGO) Lands	167
Federal Lands	21
Other New York State Owned Lands	7,633
Miscellaneous Protected Lands	31
NYS Agricultural Conservation Easements	0
NYS Working Forest/Public Access Conservation Easements	6
NGO Conservation Easements	1,618
NYC Watershed Conservation Easements	0
Totals	56,663 acres

Bronx County	
Total Area: 30,863 acres	
Total Protected Land and Water Area: 5,646 acres	
% of Bronx County Lands and Waters Protected: 18.3%	Acres
Adirondack and Catskill Forest Preserves	0
New York State Forests	0
New York State Parks	21
Municipal Lands	5,624
Non-Governmental Organization (NGO) Lands	0
Federal Lands	0
Other New York State Owned Lands	1
Miscellaneous Protected Lands	0
NYS Agricultural Conservation Easements	0
NYS Working Forest/Public Access Conservation Easements	0
NGO Conservation Easements	0
NYC Watershed Conservation Easements	0
Totals	5,646 acres

Broome County	
Total Area: 457,527 acres	
Total Protected Land and Water Area: 15,909 acres	
% of Broome County Lands and Waters Protected: 3.5%	Acres
Adirondack and Catskill Forest Preserves	0
New York State Forests	8,802
New York State Parks	2,017
Municipal Lands	3,285
Non-Governmental Organization (NGO) Lands	0
Federal Lands	0
Other New York State Owned Lands	345
Miscellaneous Protected Lands	33
NYS Agricultural Conservation Easements	0
NYS Working Forest/Public Access Conservation Easements	0
NGO Conservation Easements	1,427
NYC Watershed Conservation Easements	0
Totals	15,909 acres

Cattaraugus County	
Total Area: 847,714 acres	
Total Protected Land and Water Area: 106,673 acres	
% of Cattaraugus County Lands and Waters Protected: 12.6%	Acres
Adirondack and Catskill Forest Preserves	0
New York State Forests	31,536
New York State Parks	63,413
Municipal Lands	2,253
Non-Governmental Organization (NGO) Lands	1,517
Federal Lands	60
Other New York State Owned Lands	4,563
Miscellaneous Protected Lands	16
NYS Agricultural Conservation Easements	0
NYS Working Forest/Public Access Conservation Easements	40
NGO Conservation Easements	3,275
NYC Watershed Conservation Easements	0
Totals	106,673 acres

Cayuga County	
Total Area: 470,452 acres	
Total Protected Land and Water Area: 30,224 acres	
% of Cayuga County Lands and Waters Protected: 6.4%	Acres
Adirondack and Catskill Forest Preserves	0
New York State Forests	8,709
New York State Parks	2,340
Municipal Lands	2,764
Non-Governmental Organization (NGO) Lands	217
Federal Lands	870
Other New York State Owned Lands	5,051
Miscellaneous Protected Lands	113
NYS Agricultural Conservation Easements	7,584
NYS Working Forest/Public Access Conservation Easements	63
NGO Conservation Easements	2,513
NYC Watershed Conservation Easements	0
Totals	30,224 acres

Chautauqua County	
Total Area: 695,982 acres	
Total Protected Land and Water Area: 28,839 acres	
% of Chautauqua County Lands and Waters Protected: 4.1%	Acres
Adirondack and Catskill Forest Preserves	0
New York State Forests	16,853
New York State Parks	625
Municipal Lands	2,550
Non-Governmental Organization (NGO) Lands	974
Federal Lands	28
Other New York State Owned Lands	5,481
Miscellaneous Protected Lands	31
NYS Agricultural Conservation Easements	0
NYS Working Forest/Public Access Conservation Easements	12
NGO Conservation Easements	2,285
NYC Watershed Conservation Easements	0
Totals	28,839 acres

Chemung County	
Total Area: 262,816 acres	
Total Protected Land and Water Area: 5,832 acres	
% of Chemung County Lands and Waters Protected: 2.2%	Acres
Adirondack and Catskill Forest Preserves	0
New York State Forests	1,203
New York State Parks	925
Municipal Lands	2,307
Non-Governmental Organization (NGO) Lands	278
Federal Lands	25
Other New York State Owned Lands	132
Miscellaneous Protected Lands	140
NYS Agricultural Conservation Easements	0
NYS Working Forest/Public Access Conservation Easements	0
NGO Conservation Easements	822
NYC Watershed Conservation Easements	0
Totals	5,832 acres

Chenango County	
Total Area: 574,716 acres	
Total Protected Land and Water Area: 82,762 acres	
% of Chenango County Lands and Waters Protected: 14.4%	
	Acres
Adirondack and Catskill Forest Preserves	0
New York State Forests	74,092
New York State Parks	1,135
Municipal Lands	1,114
Non-Governmental Organization (NGO) Lands	0
Federal Lands	7
Other New York State Owned Lands	5,398
Miscellaneous Protected Lands	208
NYS Agricultural Conservation Easements	0
NYS Working Forest/Public Access Conservation Easements	0
NGO Conservation Easements	808
NYC Watershed Conservation Easements	0
Totals	82,762 acres

Clinton County	
Total Area: 714,748 acres	
Total Protected Land and Water Area: 122,425 acres	
% of Clinton County Lands and Waters Protected: 17.1%	
	Acres
Adirondack and Catskill Forest Preserves	50,718
New York State Forests	19,669
New York State Parks	1,770
Municipal Lands	2,153
Non-Governmental Organization (NGO) Lands	958
Federal Lands	5
Other New York State Owned Lands	7,327
Miscellaneous Protected Lands	16
NYS Agricultural Conservation Easements	4,077
NYS Working Forest/Public Access Conservation Easements	31,646
NGO Conservation Easements	4,086
NYC Watershed Conservation Easements	0
Totals	122,425 acres

Columbia County	
Total Area: 414,878 acres	
Total Protected Land and Water Area: 61,300 acres	
% of Columbia County Lands and Waters Protected: 14.8%	
	Acres
Adirondack and Catskill Forest Preserves	0
New York State Forests	4,692
New York State Parks	7,145
Municipal Lands	1,105
Non-Governmental Organization (NGO) Lands	4,948
Federal Lands	297
Other New York State Owned Lands	5,123
Miscellaneous Protected Lands	96
NYS Agricultural Conservation Easements	3,636
NYS Working Forest/Public Access Conservation Easements	441
NGO Conservation Easements	33,817
NYC Watershed Conservation Easements	0
Totals	61,300 acres

Cortland County	
Total Area: 320,780 acres	
Total Protected Land and Water Area: 36,696 acres	
% of Cortland County Lands and Waters Protected: 11.4%	
	Acres
Adirondack and Catskill Forest Preserves	0
New York State Forests	31,194
New York State Parks	0
Municipal Lands	584
Non-Governmental Organization (NGO) Lands	0
Federal Lands	4
Other New York State Owned Lands	937
Miscellaneous Protected Lands	70
NYS Agricultural Conservation Easements	3,627
NYS Working Forest/Public Access Conservation Easements	5
NGO Conservation Easements	275
NYC Watershed Conservation Easements	0
Totals	36,696 acres

Delaware County	
Total Area: 938,460 acres	
Total Protected Land and Water Area: 117,407 acres	
% of Delaware County Lands and Waters Protected: 12.5%	
	Acres
Adirondack and Catskill Forest Preserves	38,453
New York State Forests	19,391
New York State Parks	1,483
Municipal Lands	1,251
Non-Governmental Organization (NGO) Lands	652
Federal Lands	6,643
Other New York State Owned Lands	11,212
Miscellaneous Protected Lands	25
NYS Agricultural Conservation Easements	0
NYS Working Forest/Public Access Conservation Easements	252
NGO Conservation Easements	4,894
NYC Watershed Conservation Easements	33,151
Totals	117,407 acres

Dutchess County	
Total Area: 527,946 acres	
Total Protected Land and Water Area: 67,084 acres	
% of Dutchess County Lands and Waters Protected: 12.7%	
	Acres
Adirondack and Catskill Forest Preserves	0
New York State Forests	825
New York State Parks	9,049
Municipal Lands	4,946
Non-Governmental Organization (NGO) Lands	3,059
Federal Lands	31,933
Other New York State Owned Lands	5,862
Miscellaneous Protected Lands	48
NYS Agricultural Conservation Easements	2,011
NYS Working Forest/Public Access Conservation Easements	128
NGO Conservation Easements	8,166
NYC Watershed Conservation Easements	1,057
Totals	67,084 acres

Erie County	
Total Area: 675,684 acres	
Total Protected Land and Water Area: 22,813 acres	
% of Erie County Lands and Waters Protected: 3.4%	
	Acres
Adirondack and Catskill Forest Preserves	0 acres
New York State Forests	23
New York State Parks	3,442
Municipal Lands	10,997
Non-Governmental Organization (NGO) Lands	418
Federal Lands	9
Other New York State Owned Lands	2,861
Miscellaneous Protected Lands	319
NYS Agricultural Conservation Easements	1,592
NYS Working Forest/Public Access Conservation Easements	10
NGO Conservation Easements	3,142
NYC Watershed Conservation Easements	0
Totals	22,813 acres

Essex County	
Total Area: 1,225,763 acres	
Total Protected Land and Water Area: 734,029 acres	
% of Essex County Lands and Waters Protected: 60%	
	Acres
Adirondack and Catskill Forest Preserves	602,249
New York State Forests	0
New York State Parks	652
Municipal Lands	2,879
Non-Governmental Organization (NGO) Lands	8,002
Federal Lands	1
Other New York State Owned Lands	1,519
Miscellaneous Protected Lands	32
NYS Agricultural Conservation Easements	130
NYS Working Forest/Public Access Conservation Easements	102,215
NGO Conservation Easements	16,350
NYC Watershed Conservation Easements	0
Totals	734,029 acres

Franklin County	
Total Area: 1,086,178 acres	
Total Protected Land and Water Area: 543,411 acres	
% of Franklin County Lands and Waters Protected: 50%	Acres
Adirondack and Catskill Forest Preserves	267,366
New York State Forests	23,826
New York State Parks	0
Municipal Lands	912
Non-Governmental Organization (NGO) Lands	19,455
Federal Lands	19
Other New York State Owned Lands	158
Miscellaneous Protected Lands	42
NYS Agricultural Conservation Easements	0
NYS Working Forest/Public Access Conservation Easements	173,905
NGO Conservation Easements	57,728
NYC Watershed Conservation Easements	0
Totals	543,411 acres

Fulton County	
Total Area: 340,762 acres	
Total Protected Land and Water Area: 98,720 acres	
% of Fulton County Lands and Waters Protected: 29%	Acres
Adirondack and Catskill Forest Preserves	80,690
New York State Forests	5,865
New York State Parks	33
Municipal Lands	5,276
Non-Governmental Organization (NGO) Lands	18
Federal Lands	14
Other New York State Owned Lands	395
Miscellaneous Protected Lands	2,308
NYS Agricultural Conservation Easements	0
NYS Working Forest/Public Access Conservation Easements	3,359
NGO Conservation Easements	762
NYC Watershed Conservation Easements	0
Totals	98,720 acres

Genesee County	
Total Area: 317,299 acres	
Total Protected Land and Water Area: 14,783 acres	
% of Genesee County Lands and Waters Protected: 4.7%	Acres
Adirondack and Catskill Forest Preserves	0
New York State Forests	0
New York State Parks	1,844
Municipal Lands	1,165
Non-Governmental Organization (NGO) Lands	130
Federal Lands	5,458
Other New York State Owned Lands	5,387
Miscellaneous Protected Lands	110
NYS Agricultural Conservation Easements	0
NYS Working Forest/Public Access Conservation Easements	0
NGO Conservation Easements	689
NYC Watershed Conservation Easements	0
Totals	14,783 acres

Greene County	
Total Area: 420,880 acres	
Total Protected Land and Water Area: 100,465 acres	
% of Greene County Lands and Waters Protected: 23.9%	Acres
Adirondack and Catskill Forest Preserves	78,302
New York State Forests	5,455
New York State Parks	165
Municipal Lands	1,436
Non-Governmental Organization (NGO) Lands	1,424
Federal Lands	1
Other New York State Owned Lands	2,133
Miscellaneous Protected Lands	2
NYS Agricultural Conservation Easements	0
NYS Working Forest/Public Access Conservation Easements	4
NGO Conservation Easements	463
NYC Watershed Conservation Easements	11,080
Totals	100,465 acres

Hamilton County	
Total Area: 1,156,169 acres	
Total Protected Land and Water Area: 954,460 acres	
% of Hamilton County Lands and Waters Protected: 82.6%	
	Acres
Adirondack and Catskill Forest Preserves	801,276
New York State Forests	0
New York State Parks	0
Municipal Lands	287
Non-Governmental Organization (NGO) Lands	212
Federal Lands	0
Other New York State Owned Lands	0
Miscellaneous Protected Lands	61
NYS Agricultural Conservation Easements	0
NYS Working Forest/Public Access Conservation Easements	131,907
NGO Conservation Easements	20,717
NYC Watershed Conservation Easements	0
Totals	954,460 acres

Herkimer County	
Total Area: 932,402 acres	
Total Protected Land and Water Area: 422,795 acres	
% of Herkimer County Lands and Waters Protected: 45.3%	
	Acres
Adirondack and Catskill Forest Preserves	358,545
New York State Forests	4,704
New York State Parks	178
Municipal Lands	8,288
Non-Governmental Organization (NGO) Lands	71
Federal Lands	18
Other New York State Owned Lands	1,266
Miscellaneous Protected Lands	471
NYS Agricultural Conservation Easements	0
NYS Working Forest/Public Access Conservation Easements	47,331
NGO Conservation Easements	1,923
NYC Watershed Conservation Easements	0
Totals	422,795 acres

Jefferson County	
Total Area: 860,943 acres	
Total Protected Land and Water Area: 66,113 acres	
% of Jefferson County Lands and Waters Protected: 7.7%	Acres
Adirondack and Catskill Forest Preserves	0
New York State Forests	16,646
New York State Parks	5,517
Municipal Lands	1,489
Non-Governmental Organization (NGO) Lands	9,054
Federal Lands	24
Other New York State Owned Lands	22,264
Miscellaneous Protected Lands	3
NYS Agricultural Conservation Easements	2,748
NYS Working Forest/Public Access Conservation Easements	18
NGO Conservation Easements	8,350
NYC Watershed Conservation Easements	0
Totals	66,113 acres

Kings County	
Total Area: 52,820 acres	
Total Protected Land and Water Area: 12,804 acres	
% of Kings County Lands and Waters Protected: 24.2%	Acres
Adirondack and Catskill Forest Preserves	0
New York State Forests	0
New York State Parks	410
Municipal Lands	2,809
Non-Governmental Organization (NGO) Lands	0
Federal Lands	9,585
Other New York State Owned Lands	0
Miscellaneous Protected Lands	0
NYS Agricultural Conservation Easements	0
NYS Working Forest/Public Access Conservation Easements	0
NGO Conservation Easements	0
NYC Watershed Conservation Easements	0
Totals	12,804 acres

Lewis County	
Total Area: 824,936 acres	
Total Protected Land and Water Area: 259,722 acres	
% of Lewis County Lands and Waters Protected: 31.5%	
	Acres
Adirondack and Catskill Forest Preserves	57,998
New York State Forests	86,535
New York State Parks	1,890
Municipal Lands	5,255
Non-Governmental Organization (NGO) Lands	18,905
Federal Lands	46
Other New York State Owned Lands	8,106
Miscellaneous Protected Lands	18
NYS Agricultural Conservation Easements	0
NYS Working Forest/Public Access Conservation Easements	79,565
NGO Conservation Easements	1,404
NYC Watershed Conservation Easements	0
Totals	259,722 acres

Livingston County	
Total Area: 409,980 acres	
Total Protected Land and Water Area: 44,045 acres	
% of Livingston County Lands and Waters Protected: 10.7%	
	Acres
Adirondack and Catskill Forest Preserves	0
New York State Forests	7,092
New York State Parks	10,813
Municipal Lands	576
Non-Governmental Organization (NGO) Lands	430
Federal Lands	19
Other New York State Owned Lands	5,354
Miscellaneous Protected Lands	45
NYS Agricultural Conservation Easements	13,702
NYS Working Forest/Public Access Conservation Easements	0
NGO Conservation Easements	6,014
NYC Watershed Conservation Easements	0
Totals	44,045 acres

Madison County	
Total Area: 422,930 acres	
Total Protected Land and Water Area: 40,308 acres	
% of Madison County Lands and Waters Protected: 9.5%	Acres
Adirondack and Catskill Forest Preserves	0
New York State Forests	23,140
New York State Parks	892
Municipal Lands	752
Non-Governmental Organization (NGO) Lands	484
Federal Lands	85
Other New York State Owned Lands	4,894
Miscellaneous Protected Lands	16
NYS Agricultural Conservation Easements	2,893
NYS Working Forest/Public Access Conservation Easements	0
NGO Conservation Easements	7,152
NYC Watershed Conservation Easements	0
Totals	40,308 acres

Monroe County	
Total Area: 426,828 acres	
Total Protected Land and Water Area: 23,648 acres	
% of Monroe County Lands and Waters Protected: 5.5%	Acres
Adirondack and Catskill Forest Preserves	0
New York State Forests	0
New York State Parks	1,605
Municipal Lands	15,884
Non-Governmental Organization (NGO) Lands	488
Federal Lands	15
Other New York State Owned Lands	3,159
Miscellaneous Protected Lands	259
NYS Agricultural Conservation Easements	1,355
NYS Working Forest/Public Access Conservation Easements	0
NGO Conservation Easements	883
NYC Watershed Conservation Easements	0
Totals	23,648 acres

Montgomery County	
Total Area: 262,427 acres	
Total Protected Land and Water Area: 10,027 acres	
% of Montgomery County Lands and Waters Protected: 3.8%	Acres
Adirondack and Catskill Forest Preserves	0
New York State Forests	6,779
New York State Parks	268
Municipal Lands	436
Non-Governmental Organization (NGO) Lands	236
Federal Lands	30
Other New York State Owned Lands	0
Miscellaneous Protected Lands	46
NYS Agricultural Conservation Easements	846
NYS Working Forest/Public Access Conservation Easements	0
NGO Conservation Easements	1,386
NYC Watershed Conservation Easements	0
Totals	10,027 acres

Nassau County	
Total Area: 201,730 acres	
Total Protected Land and Water Area: 11,533 acres	
% of Nassau County Lands and Waters Protected: 5.7%	Acres
Adirondack and Catskill Forest Preserves	0
New York State Forests	0
New York State Parks	5,328
Municipal Lands	5,005
Non-Governmental Organization (NGO) Lands	66
Federal Lands	591
Other New York State Owned Lands	172
Miscellaneous Protected Lands	178
NYS Agricultural Conservation Easements	0
NYS Working Forest/Public Access Conservation Easements	54
NGO Conservation Easements	139
NYC Watershed Conservation Easements	0
Totals	11,533 acres

New York County	
Total Area: 20,528 acres	
Total Protected Land and Water Area: 2,735 acres	
% of New York County Lands and Waters Protected: 13.3%	
	Acres
Adirondack and Catskill Forest Preserves	0
New York State Forests	0
New York State Parks	341
Municipal Lands	2,341
Non-Governmental Organization (NGO) Lands	0
Federal Lands	50
Other New York State Owned Lands	0
Miscellaneous Protected Lands	0
NYS Agricultural Conservation Easements	0
NYS Working Forest/Public Access Conservation Easements	0
NGO Conservation Easements	3
NYC Watershed Conservation Easements	0
Totals	2,735 acres

Niagara County	
Total Area: 341,020 acres	
Total Protected Land and Water Area: 8,560 acres	
% of Niagara County Lands and Waters Protected: 2.5%	
	Acres
Adirondack and Catskill Forest Preserves	0
New York State Forests	0
New York State Parks	2,524
Municipal Lands	1,967
Non-Governmental Organization (NGO) Lands	0
Federal Lands	8
Other New York State Owned Lands	3,300
Miscellaneous Protected Lands	24
NYS Agricultural Conservation Easements	0
NYS Working Forest/Public Access Conservation Easements	0
NGO Conservation Easements	737
NYC Watershed Conservation Easements	0
Totals	8,560 acres

Oneida County	
Total Area: 804,297 acres	
Total Protected Land and Water Area: 68,203 acres	
% of Oneida County Lands and Waters Protected: 8.5%	
	Acres
Adirondack and Catskill Forest Preserves	6,522
New York State Forests	40,987
New York State Parks	2,908
Municipal Lands	4,222
Non-Governmental Organization (NGO) Lands	1,804
Federal Lands	44
Other New York State Owned Lands	7,128
Miscellaneous Protected Lands	151
NYS Agricultural Conservation Easements	0
NYS Working Forest/Public Access Conservation Easements	2,210
NGO Conservation Easements	2,227
NYC Watershed Conservation Easements	0
Totals	68,203 acres

Onondaga County	
Total Area: 515,313 acres	
Total Protected Land and Water Area: 35,087 acres	
% of Onondaga County Lands and Waters Protected: 6.8%	
	Acres
Adirondack and Catskill Forest Preserves	0
New York State Forests	2,179
New York State Parks	3,209
Municipal Lands	5,849
Non-Governmental Organization (NGO) Lands	2,943
Federal Lands	9
Other New York State Owned Lands	11,579
Miscellaneous Protected Lands	124
NYS Agricultural Conservation Easements	7,684
NYS Working Forest/Public Access Conservation Easements	2
NGO Conservation Easements	1,509
NYC Watershed Conservation Easements	0
Totals	35,087 acres

Ontario County	
Total Area: 424,037 acres	
Total Protected Land and Water Area: 18,716 acres	
% of Ontario County Lands and Waters Protected: 4.4%	Acres
Adirondack and Catskill Forest Preserves	0
New York State Forests	3,470
New York State Parks	1,482
Municipal Lands	2,098
Non-Governmental Organization (NGO) Lands	979
Federal Lands	4
Other New York State Owned Lands	5,892
Miscellaneous Protected Lands	135
NYS Agricultural Conservation Easements	2,303
NYS Working Forest/Public Access Conservation Easements	0
NGO Conservation Easements	2,353
NYC Watershed Conservation Easements	0
Totals	18,716 acres

Orange County	
Total Area: 536,379 acres	
Total Protected Land and Water Area: 103,167 acres	
% of Orange County Lands and Waters Protected: 19.2%	Acres
Adirondack and Catskill Forest Preserves	0
New York State Forests	9,571
New York State Parks	56,387
Municipal Lands	13,142
Non-Governmental Organization (NGO) Lands	7,217
Federal Lands	5,939
Other New York State Owned Lands	1,650
Miscellaneous Protected Lands	42
NYS Agricultural Conservation Easements	3,125
NYS Working Forest/Public Access Conservation Easements	3,930
NGO Conservation Easements	2,164
NYC Watershed Conservation Easements	0
Totals	103,167 acres

Orleans County	
Total Area: 251,631 acres	
Total Protected Land and Water Area: 7,005 acres	
% of Orleans County Lands and Waters Protected: 2.8%	Acres
Adirondack and Catskill Forest Preserves	0
New York State Forests	0
New York State Parks	784
Municipal Lands	144
Non-Governmental Organization (NGO) Lands	0
Federal Lands	5,523
Other New York State Owned Lands	360
Miscellaneous Protected Lands	26
NYS Agricultural Conservation Easements	0
NYS Working Forest/Public Access Conservation Easements	0
NGO Conservation Easements	168
NYC Watershed Conservation Easements	0
Totals	7,005 acres

Oswego County	
Total Area: 651,407 acres	
Total Protected Land and Water Area: 58,718 acres	
% of Oswego County Lands and Waters Protected: 9%	Acres
Adirondack and Catskill Forest Preserves	0 acres
New York State Forests	29,852
New York State Parks	1,622
Municipal Lands	2,551
Non-Governmental Organization (NGO) Lands	905
Federal Lands	47
Other New York State Owned Lands	21,823
Miscellaneous Protected Lands	118
NYS Agricultural Conservation Easements	0
NYS Working Forest/Public Access Conservation Easements	420
NGO Conservation Easements	1,380
NYC Watershed Conservation Easements	0
Totals	58,718 acres

Otsego County	
Total Area: 649,552 acres	
Total Protected Land and Water Area: 34,188 acres	
% of Otsego County Lands and Waters Protected: 5.3%	
	Acres
Adirondack and Catskill Forest Preserves	0
New York State Forests	20,353
New York State Parks	3,961
Municipal Lands	2,030
Non-Governmental Organization (NGO) Lands	83
Federal Lands	62
Other New York State Owned Lands	206
Miscellaneous Protected Lands	144
NYS Agricultural Conservation Easements	334
NYS Working Forest/Public Access Conservation Easements	0
NGO Conservation Easements	7,015
NYC Watershed Conservation Easements	0
Totals	34,188 acres

Putnam County	
Total Area: 157,546 acres	
Total Protected Land and Water Area: 44,553 acres	
% of Putnam County Lands and Waters Protected: 28.3%	
	Acres
Adirondack and Catskill Forest Preserves	0
New York State Forests	983
New York State Parks	20,309
Municipal Lands	3,701
Non-Governmental Organization (NGO) Lands	1,809
Federal Lands	2,568
Other New York State Owned Lands	3,258
Miscellaneous Protected Lands	84
NYS Agricultural Conservation Easements	129
NYS Working Forest/Public Access Conservation Easements	2,437
NGO Conservation Easements	3,342
NYC Watershed Conservation Easements	5,933
Totals	44,553 acres

Queens County	
Total Area: 80,102 acres	
Total Protected Land and Water Area: 14,071 acres	
% of Queens County Lands and Waters Protected: 17.6%	Acres
Adirondack and Catskill Forest Preserves	0
New York State Forests	0
New York State Parks	29
Municipal Lands	5,104
Non-Governmental Organization (NGO) Lands	0
Federal Lands	8,882
Other New York State Owned Lands	52
Miscellaneous Protected Lands	0
NYS Agricultural Conservation Easements	0
NYS Working Forest/Public Access Conservation Easements	3
NGO Conservation Easements	1
NYC Watershed Conservation Easements	0
Totals	14,071 acres

Rensselaer County	
Total Area: 425,595 acres	
Total Protected Land and Water Area: 55,482 acres	
% of Rensselaer County Lands and Waters Protected: 13%	Acres
Adirondack and Catskill Forest Preserves	0
New York State Forests	14,754
New York State Parks	4,096
Municipal Lands	4,037
Non-Governmental Organization (NGO) Lands	9,256
Federal Lands	24
Other New York State Owned Lands	5,687
Miscellaneous Protected Lands	21
NYS Agricultural Conservation Easements	8,356
NYS Working Forest/Public Access Conservation Easements	1,517
NGO Conservation Easements	7,734
NYC Watershed Conservation Easements	0
Totals	55,482 acres

Richmond County	
Total Area: 37,869 acres	
Total Protected Land and Water Area: 8,118 acres	
% of Richmond County Lands and Waters Protected: 21.4%	Acres
Adirondack and Catskill Forest Preserves	0
New York State Forests	164
New York State Parks	259
Municipal Lands	5,753
Non-Governmental Organization (NGO) Lands	1
Federal Lands	1,464
Other New York State Owned Lands	365
Miscellaneous Protected Lands	0
NYS Agricultural Conservation Easements	0
NYS Working Forest/Public Access Conservation Easements	112
NGO Conservation Easements	0
NYC Watershed Conservation Easements	0
Totals	8,118 acres

Rockland County	
Total Area: 127,520 acres	
Total Protected Land and Water Area: 38,086 acres	
% of Rockland County Lands and Waters Protected: 29.9%	Acres
Adirondack and Catskill Forest Preserves	0
New York State Forests	0
New York State Parks	32,951
Municipal Lands	4,286
Non-Governmental Organization (NGO) Lands	0
Federal Lands	520
Other New York State Owned Lands	90
Miscellaneous Protected Lands	57
NYS Agricultural Conservation Easements	0
NYS Working Forest/Public Access Conservation Easements	117
NGO Conservation Easements	65
NYC Watershed Conservation Easements	0
Totals	38,086 acres

Saratoga County	
Total Area: 539,742 acres	
Total Protected Land and Water Area: 83,731 acres	
% of Saratoga County Lands and Waters Protected: 15.5%	Acres
Adirondack and Catskill Forest Preserves	17,242
New York State Forests	3,905
New York State Parks	6,434
Municipal Lands	8,333
Non-Governmental Organization (NGO) Lands	2,247
Federal Lands	3,557
Other New York State Owned Lands	1,314
Miscellaneous Protected Lands	1,058
NYS Agricultural Conservation Easements	3,905
NYS Working Forest/Public Access Conservation Easements	30,957
NGO Conservation Easements	4,779
NYC Watershed Conservation Easements	0
Totals	83,731 acres

Schenectady County	
Total Area: 133,948 acres	
Total Protected Land and Water Area: 4,384 acres	
% of Schenectady County Lands and Waters Protected: 3.3%	Acres
Adirondack and Catskill Forest Preserves	0
New York State Forests	693
New York State Parks	105
Municipal Lands	2,822
Non-Governmental Organization (NGO) Lands	351
Federal Lands	1
Other New York State Owned Lands	0
Miscellaneous Protected Lands	22
NYS Agricultural Conservation Easements	0
NYS Working Forest/Public Access Conservation Easements	0
NGO Conservation Easements	390
NYC Watershed Conservation Easements	0
Totals	4,384 acres

Schoharie County	
Total Area: 400,559 acres	
Total Protected Land and Water Area: 41,694 acres	
% of Schoharie County Lands and Waters Protected: 10.4%	Acres
Adirondack and Catskill Forest Preserves	0
New York State Forests	33,501
New York State Parks	536
Municipal Lands	983
Non-Governmental Organization (NGO) Lands	385
Federal Lands	2
Other New York State Owned Lands	367
Miscellaneous Protected Lands	31
NYS Agricultural Conservation Easements	0
NYS Working Forest/Public Access Conservation Easements	0
NGO Conservation Easements	2,470
NYC Watershed Conservation Easements	3,419
Totals	41,694 acres

Schuyler County	
Total Area: 219,036 acres	
Total Protected Land and Water Area: 37,776 acres	
% of Schuyler County Lands and Waters Protected: 17.2%	Acres
Adirondack and Catskill Forest Preserves	0
New York State Forests	17,072
New York State Parks	875
Municipal Lands	219
Non-Governmental Organization (NGO) Lands	65
Federal Lands	11,482
Other New York State Owned Lands	6,417
Miscellaneous Protected Lands	0
NYS Agricultural Conservation Easements	591
NYS Working Forest/Public Access Conservation Easements	0
NGO Conservation Easements	1,045
NYC Watershed Conservation Easements	0
Totals	37,776 acres

Seneca County	
Total Area: 249,845 acres	
Total Protected Land and Water Area: 21,562 acres	
% of Seneca County Lands and Waters Protected: 8.6%	
	Acres
Adirondack and Catskill Forest Preserves	0
New York State Forests	0
New York State Parks	2,615
Municipal Lands	222
Non-Governmental Organization (NGO) Lands	0
Federal Lands	16,386
Other New York State Owned Lands	548
Miscellaneous Protected Lands	13
NYS Agricultural Conservation Easements	381
NYS Working Forest/Public Access Conservation Easements	0
NGO Conservation Easements	1,397
NYC Watershed Conservation Easements	0
Totals	21,562 acres

St. Lawrence County	
Total Area: 1,803,877 acres	
Total Protected Land and Water Area: 506,186 acres	
% of St. Lawrence County Lands and Waters Protected: 28.1%	
	Acres
Adirondack and Catskill Forest Preserves	172,412
New York State Forests	65,989
New York State Parks	7,948
Municipal Lands	1,336
Non-Governmental Organization (NGO) Lands	2,305
Federal Lands	472
Other New York State Owned Lands	18,440
Miscellaneous Protected Lands	40
NYS Agricultural Conservation Easements	449
NYS Working Forest/Public Access Conservation Easements	214,972
NGO Conservation Easements	21,823
NYC Watershed Conservation Easements	0
Totals	506,186 acres

Steuben County	
Total Area: 898,789 acres	
Total Protected Land and Water Area: 32,164 acres	
% of Steuben County Lands and Waters Protected: 3.6%	Acres
Adirondack and Catskill Forest Preserves	0
New York State Forests	24,029
New York State Parks	1,453
Municipal Lands	1,309
Non-Governmental Organization (NGO) Lands	0
Federal Lands	32
Other New York State Owned Lands	3,766
Miscellaneous Protected Lands	25
NYS Agricultural Conservation Easements	0
NYS Working Forest/Public Access Conservation Easements	5
NGO Conservation Easements	1,545
NYC Watershed Conservation Easements	0
Totals	32,164 acres

Suffolk County	
Total Area: 738,015 acres	
Total Protected Land and Water Area: 112,281 acres	
% of Suffolk County Lands and Waters Protected: 15.2%	Acres
Adirondack and Catskill Forest Preserves	0
New York State Forests	15,263
New York State Parks	24,058
Municipal Lands	28,054
Non-Governmental Organization (NGO) Lands	17,640
Federal Lands	20,245
Other New York State Owned Lands	3,291
Miscellaneous Protected Lands	1,087
NYS Agricultural Conservation Easements	1,064
NYS Working Forest/Public Access Conservation Easements	362
NGO Conservation Easements	1,217
NYC Watershed Conservation Easements	0
Totals	112,281 acres

Sullivan County	
Total Area: 637,427 acres	
Total Protected Land and Water Area: 78,329 acres	
% of Sullivan County Lands and Waters Protected: 12.2%	Acres
Adirondack and Catskill Forest Preserves	17,032
New York State Forests	2,730
New York State Parks	1,402
Municipal Lands	2,820
Non-Governmental Organization (NGO) Lands	33
Federal Lands	22,626
Other New York State Owned Lands	17,210
Miscellaneous Protected Lands	1,053
NYS Agricultural Conservation Easements	0
NYS Working Forest/Public Access Conservation Easements	5,728
NGO Conservation Easements	4,963
NYC Watershed Conservation Easements	2,732
Totals	78,329 acres

Tioga County	
Total Area: 334,383 acres	
Total Protected Land and Water Area: 12,596 acres	
% of Tioga County Lands and Waters Protected: 3.8%	Acres
Adirondack and Catskill Forest Preserves	0 acres
New York State Forests	10,843
New York State Parks	537
Municipal Lands	442
Non-Governmental Organization (NGO) Lands	0
Federal Lands	12
Other New York State Owned Lands	4
Miscellaneous Protected Lands	9
NYS Agricultural Conservation Easements	0
NYS Working Forest/Public Access Conservation Easements	0
NGO Conservation Easements	749
NYC Watershed Conservation Easements	0
Totals	12,596 acres

Tompkins County	
Total Area: 314,432 acres	
Total Protected Land and Water Area: 37,610 acres	
% of Tompkins County Lands and Waters Protected: 12%	Acres
Adirondack and Catskill Forest Preserves	0 acres
New York State Forests	20,012
New York State Parks	3,060
Municipal Lands	1,420
Non-Governmental Organization (NGO) Lands	357
Federal Lands	8
Other New York State Owned Lands	6,198
Miscellaneous Protected Lands	26
NYS Agricultural Conservation Easements	2,283
NYS Working Forest/Public Access Conservation Easements	55
NGO Conservation Easements	4,191
NYC Watershed Conservation Easements	0
Totals	37,610 acres

Ulster County	
Total Area: 742,260 acres	
Total Protected Land and Water Area: 224,747 acres	
% of Ulster County Lands and Waters Protected: 30.3%	Acres
Adirondack and Catskill Forest Preserves	155,078
New York State Forests	5928
New York State Parks	24,129
Municipal Lands	2,903
Non-Governmental Organization (NGO) Lands	12,626
Federal Lands	598
Other New York State Owned Lands	965
Miscellaneous Protected Lands	17
NYS Agricultural Conservation Easements	1,221
NYS Working Forest/Public Access Conservation Easements	535
NGO Conservation Easements	10,170
NYC Watershed Conservation Easements	10,577
Totals	224,747 acres

Warren County	
Total Area: 595,887 acres	
Total Protected Land and Water Area: 232,467 acres	
% of Warren County Lands and Waters Protected: 39%	
	Acres
Adirondack and Catskill Forest Preserves	204,848
New York State Forests	544
New York State Parks	1,546
Municipal Lands	4,710
Non-Governmental Organization (NGO) Lands	509
Federal Lands	0
Other New York State Owned Lands	73
Miscellaneous Protected Lands	941
NYS Agricultural Conservation Easements	0
NYS Working Forest/Public Access Conservation Easements	16,325
NGO Conservation Easements	2,971
NYC Watershed Conservation Easements	0
Totals	232,467 acres

Washington County	
Total Area: 541,143 acres	
Total Protected Land and Water Area: 70,076 acres	
% of Washington County Lands and Waters Protected: 12.9%	
	Acres
Adirondack and Catskill Forest Preserves	23,430
New York State Forests	7,239
New York State Parks	171
Municipal Lands	1,900
Non-Governmental Organization (NGO) Lands	2,422
Federal Lands	0
Other New York State Owned Lands	1,000
Miscellaneous Protected Lands	144
NYS Agricultural Conservation Easements	8,439
NYS Working Forest/Public Access Conservation Easements	10,511
NGO Conservation Easements	14,820
NYC Watershed Conservation Easements	0
Totals	70,076 acres

Wayne County	
Total Area: 391,892 acres	
Total Protected Land and Water Area: 27,895 acres	
% of Wayne County Lands and Waters Protected: 7.1%	
	Acres
Adirondack and Catskill Forest Preserves	0
New York State Forests	0
New York State Parks	884
Municipal Lands	884
Non-Governmental Organization (NGO) Lands	475
Federal Lands	11,639
Other New York State Owned Lands	9,761
Miscellaneous Protected Lands	23
NYS Agricultural Conservation Easements	2,986
NYS Working Forest/Public Access Conservation Easements	0
NGO Conservation Easements	1,243
NYC Watershed Conservation Easements	0
Totals	27,895 acres

Westchester County	
Total Area: 305,218 acres	
Total Protected Land and Water Area: 35,734 acres	
% of Westchester County Lands and Waters Protected: 11.7%	
	Acres
Adirondack and Catskill Forest Preserves	0
New York State Forests	320
New York State Parks	3,881
Municipal Lands	22,295
Non-Governmental Organization (NGO) Lands	2,390
Federal Lands	174
Other New York State Owned Lands	26
Miscellaneous Protected Lands	160
NYS Agricultural Conservation Easements	291
NYS Working Forest/Public Access Conservation Easements	423
NGO Conservation Easements	4,805
NYC Watershed Conservation Easements	969
Totals	35,734 acres

Wyoming County	
Total Area: 382,006 acres	
Total Protected Land and Water Area: 15,966 acres	
% of Wyoming County Lands and Waters Protected: 4.2%	Acres
Adirondack and Catskill Forest Preserves	0
New York State Forests	5
New York State Parks	5,727
Municipal Lands	1,134
Non-Governmental Organization (NGO) Lands	177
Federal Lands	7
Other New York State Owned Lands	2,553
Miscellaneous Protected Lands	14
NYS Agricultural Conservation Easements	6,052
NYS Working Forest/Public Access Conservation Easements	12
NGO Conservation Easements	285
NYC Watershed Conservation Easements	0
Totals	15,966 acres

Yates County	
Total Area: 240,459 acres	
Total Protected Land and Water Area: 11,919 acres	
% of Yates County Lands and Waters Protected: 5%	Acres
NYS Forest Preserve	0
NY State Forest	1,905
NYS Parks	632
Municipal Lands	113
NGO Lands	0
Federal Lands	5
Other NYS Lands	5,844
Misc Protected Lands	19
NYS Agriculture Conservation Easements	1,546
NYS Working Forest Conservation Easements	0
NGO Conservation Easements	1,855
NYC Watershed Conservation Easements	0
Totals	11,919 acres



Board of Directors

Officers

Charles M. Clusen

Chair

James McMartin Long

Michael Wilson

Vice-Chairs

David M. Quinn

Treasurer

Barbara Rottier

Secretary

Nancy Bernstein	Evelyn Greene
John W. Caffry	Sidney Harring
Andy Coney	Dale Jeffers
Dean Cook	Patricia Morrison
James C. Dawson	John Nemjo
Lorraine Duvall	Peter O'Shea
Robert Glennon	Philip Terrie
Roger Gray	Christopher Walsh

Staff

Peter Bauer

Executive Director

Claudia. K. Braymer, Esq.

Deputy Director

Christopher Amato, Esq.

Conservation Director and Counsel

Protect the Adirondacks is a private non-profit membership-supported organization dedicated to stewardship and protection of the wild places and rural communities of the Adirondack Park for current and future generations. Protect the Adirondacks pursues this mission through grassroots organizing, advocacy, education, research, independent public oversight of state and local agencies, and legal action. Protect the Adirondacks is led by a volunteer Board of Directors and professional staff and maintains a headquarters in Johnsburg, in the central Adirondacks.

Protect the Adirondacks has been a leading voice defending the Forest Preserve and protecting the environment of the Adirondack Park for more than a century. Protect the Adirondacks was formed in 2009 in a merger of the Association for the Protection of the Adirondacks, established in 1902, and the Residents' Committee to Protect the Adirondacks, established in 1991. Protect the Adirondacks continues a long tradition of defending the public "forever wild" Forest Preserve, protecting wildlife, waters, the great forests, and rural communities of the six-million-acre Adirondack Park.

The public Forest Preserve shapes the Adirondack Park experience by

providing stunning outdoor recreational opportunities and underwriting the local tourism economy. It also safeguards a vast array of natural habitats that protect ecological integrity and complexity across a broad, intact landscape. The Forest Preserve was created in 1885, made forever wild in 1894 in the New York Constitution, and has grown to over 2.9 million acres over the last 133 years through a bipartisan, multi-generational commitment of New Yorkers. A core focus of the work of Protect the Adirondacks is research and advocacy to protect the Forest Preserve.

Protect the Adirondacks manages a wide variety of education, advocacy, and long-term research projects, such as the Adirondack Lake Assessment Program, in partnership with the Adirondack Watershed Institute, now in its 26th season studying 75 lakes and ponds. Protect the Adirondacks partners with the Kelly Adirondack Center of Union College in the preservation and management of the Adirondack Research Library, a collection of Adirondack historic cultural history materials.

For membership information see www.protectadks.org, call 518-251-2700, or email at info@protectadks.org.



20% in 2023

An assessment of the New York State 30 by 30 Act

PROTECT 
THE ADIRONDACKS!